

Böse

GEOMORPHOLOGY AND GEOECOLOGY

SECOND INTERNATIONAL CONFERENCE ON GEOMORPHOLOGY

Organisiert durch den DEUTSCHEN ARBEITSKREIS GEOMORPHOLOGIE

FRANKFURT, SEPT. 3 - 8, 1989

Final Program



Johann Wolfgang Goethe-Universität
Frankfurt am Main

Organizing Committee

BARSCH, Dietrich, Heidelberg (Chairman)
AHNERT, Frank, Aachen (Festschrift)
BREMER, Hanna, Köln (Proceedings)
BUSCHE, Detlef, Würzburg (Abstracts)
FUCHS, Friderun, Frankfurt (Local Organizer Frankfurt)
KARRASCH, Heinz, Heidelberg (Treasurer)
SEMMELE, Arno, Frankfurt (Local Organizer Frankfurt)
SEUFFERT, Otmar, Darmstadt (Field trips)
STÄBLEIN, Gerhard, Bremen (Lecture and Poster Program)

Local Organizers at Frankfurt

General Management:

SEMMELE, Arno, Tel. 069/798-2401
FUCHS, Friderun, Tel. 069/798-2410

Registration and Information Desk:

NIERSTE-KLAUSMANN, Gundula, Tel. 069/798-2402

Lecture Halls and Projection, Rooms for Business Meetings:

HEINRICH, Jürgen, Tel. 069/798-2407

Poster Presentation:

THIEMEYER, Heinrich, Tel. 069/798-3822

Exhibition of books, maps, equipments etc.:

NAGEL, Günter, Tel. 069/798-2406

Institut für Physische Geographie
Universität Frankfurt
Senckenberganlage 36
D- 6000 Frankfurt/Main

Telex: 04 13932 unif d
Fax: 069/798-8383
Tel.: 069/798-2401 or
069/798-2913

Welcome to Frankfurt am Main !

Welcome to the 2nd International Conference on Geomorphology !

Dear Colleague:

This is the final program of the Second International Conference on Geomorphology.

We are very glad to host you in the Johann Wolfgang Goethe-University at Frankfurt; we hope that your stay in our country will be pleasant and successful and that you will enjoy the discussions on geomorphology, the city of Frankfurt, the countryside around it, and other German cities as well.

Please do not hesitate to ask anyone of your German colleagues, if you feel we can be of some help to you. Please excuse shortcomings we did overlook, as no organisation is perfect.

Arno Semmel
Chairman
Local Organizing Committee

Dietrich Barsch
Chairman
Organizing Committee

Honorary Members

BASHENINA, N.V., Moskau / S.U.

BIGARELLA, J.J., Curitiba / Brazil

BIRD, J. Brian, Montreal / Canada

CORTE, Arturo, Mendoza / Argentinien

DIKSHIT, K.R., Poona / India

FAIRBRIDGE, Rhodes, New York / U.S.A.

EROL, Oguz, Istanbul / Turkey

JOLY, Fernand, Paris / France

KING, Lester, Durban / South Africa

LEOPOLD, Luna, Berkeley / U.S.A.

RAYNAL, René, Straßburg / France

RUDBERG, Sten, Göteborg / Sweden

SCHUMM, Stan, Fort Collins / U.S.A.

TRIMMEL, Hubert, Wien / Austria

VERSTAPPEN, Herman, Enschede / Netherlands

WASHBURN, A. Lincoln, Seattle / U.S.A.

We gratefully acknowledge donations from the following societies and agencies:

Alexander von Humboldt-Stiftung, Bonn

British Council, München

British Geomorphological Research Group

Bundesministerium für Wirtschaftliche Zusammenarbeit

Catena-Verlag, Cremlingen

Carl-Duisberg-Gesellschaft, Berlin

Deutsche Lufthansa AG, Köln

Deutscher Akademischer Austauschdienst, Bonn

Deutscher Arbeitskreis für Geomorphologie

Geoöko-Verlag, Bensheim

Kreditanstalt für Wiederaufbau, Frankfurt

Land Hessen

Max-Planck-Gesellschaft, München

Robert-Bosch-Stiftung, Stuttgart

Schweizerbart'sche Verlagsbuchhandlung, Stuttgart

Stadt Frankfurt

Universität Frankfurt

U.S. Army Research, Development and Standardization Group, London

Zentralverband der Deutschen Geographen

MAIN CONFERENCE in FRANKFURT AM MAIN

Place and Date

The Main Conference takes place at the University of Frankfurt am Main on September 3-9, 1989.

The Conference Center with lecture theaters, poster presentation, exhibition, registration etc. you will find in the main building (Hauptgebäude) of the University, Mertonstraße (see map 4).

REGISTRATION AND INFORMATION DESK (Places and Opening Hours)

Sunday	Sept. 3, 1989,	12.00 - 18.00 h, Senckenberganlage 34
Monday-Friday,	Sept. 4-8, 1989,	08.00 - 18.00 h, Conference Center (see map 4)

There you will get your conference bag and all the information necessary.

Registration is still possible.

The registration fee for the whole conference is

DM 250.- (participants), DM 65.- (accompanying persons)

DM 150.- (students).

The registration fee for single-day registration is

DM 70.- (participants), DM 20.- (accompanying persons)

DM 20.- (students).

The full registration fee for the whole conference includes the following special issues:

1. Festschrift (Landforms and Landform Evolution in Western Germany)
2. Abstract Volume
3. Special Edition of Geographische Rundschau: Federal Republic of Germany
4. Two Topographic Sheets 1:50,000 Frankfurt am Main E & W

OPENING SESSION

Monday, September 4, 1989, 9.15 h, Lecture Hall VI

Welcome and Opening of the Conference by Prof. Dr. D. BARSCH,
Chairman of the Organizing Committee

Greetings by the Chancellor of the Johann Wolfgang Goethe-University,
Kanzler Dr. W. BUSCH

Greetings by Dr. H.J. MOOG, Mayor of the City of Frankfurt

Greetings and Lecture by Staatsminister K. WEIMAR, Minister für Umwelt und
Reaktorsicherheit des Landes Hessen,
"Umweltpolitik des Landes Hessen am Beispiel Gewässer- und
Bodenbelastung"

Classical Music Program by the Collegium Musicum Instrumentale of the
Johann Wolfgang Goethe-University: Antonio Vivaldi: Trio a-moll

Opening Lecture by Prof. Dr. D. Barsch: "Geomorphology and Geoecology"

LECTURE SESSIONS (see coloured pages)

The lecture program of the Conference is divided into 9 sections according to the major themes. The sections are divided into subsections. Subsections are subdivided into sessions. Each lecture session lasts 90 minutes and usually consists of the presentation of 4 papers. Speakers have 15 minutes for reading their paper, plus 5 minutes for discussion. In each of the time periods there are up to 10 parallel sessions. The main language is English. Other languages such as French or German may be used, but no translation service will be provided.

An information leaflet for speakers is included in the conference papers. There will be a room with facilities to prepare and try out the slides.

POSTER SESSIONS (see coloured pages)

The poster program of the conference is divided into 9 sections. In each of the time periods there will be up to 3 parallel sessions.

Each poster will be presented for one day.

An information leaflet for poster presentation is included in the conference papers.

EXHIBITION

An exhibition of maps, books, equipments etc. is to find in the Conference Center.

ORGANISATIONAL MEETINGS AT THE CONFERENCE

The Working Committee for International Cooperation in Geomorphology will meet on Sunday at the Department of Physical Geography, Senckenberganlage 36.

Sunday, Sept. 3, 1989, 16.00 h, Room 308

National Delegates will meet for lunch on Tuesday. On this occasion, the Working Committee for International Cooperation in Geomorphology will report on developments since the 1st International Conference on Geomorphology in Manchester in 1985. All national groups are invited to send a delegate.

Tuesday, September 5, 1989, 12.00 h, Room 101 (close to the mensa)

General Assembly

The formation of an INTERNATIONAL ASSOCIATION OF GEOMORPHOLOGISTS was discussed at the Conference in Manchester in 1985. It was agreed that a decision should be made at the Conference in Frankfurt/Main as to the nature and status of such an association.

All participants are asked to attend the General Assembly on Thursday to discuss the recommendations made by the Working Committee. Should an Association be established, a Founding Committee would have to be elected.

Thursday, September 7, 1989 at 20.30 h, Room VI

BUSINESS MEETINGS DURING THE MAIN CONFERENCE

IGU Commission on the Coastal Environment

Chairman: R. PASKOFF

Tuesday, Sept. 5, 1989, 18.00 - 19.00 h, Room H 13

European Center on Geomorphological Hazards (CERG)

Chairman: M. PANIZZA, Italy

Thursday, Sept. 7, 1989, 10.30 - 14.00 h, Room H 13

IGU Study Group on Rapid Geomorphological Hazards

Chairman: C. EMBLETON, Great Britain

Thursday, Sept. 7, 1989, 14.00 - 16.00 h, Room H 9

IGU Commission on Frost Action Environments

International Permafrost Association - Working Group on Periglacial Environments

Chairman: J. P. LAUTRIDOU, France

Thursday, Sept. 7, 1989, 17.30 - 18.30 h, Room H 13

For business meetings of commissions and working groups etc. during the Main Conference rooms are still available. Please contact the registration and information desk.

No meetings can be scheduled for the following times:

Monday	Sept. 4, 1989: morning and 18 - 22 h
Tuesday	Sept. 5, 1989: 10 - 12 h
Wednesday	Sept. 6, 1989: all day
Thursday	Sept. 7, 1989: 10 - 12 h and 18 - 22 h
Friday	Sept. 8, 1989: 10 - 12 h and 18 - 22 h.

SOCIAL EVENTS

Sunday, September 3, 1989, 18.00 h

Welcoming Reception at Department of Geography Senckenberganlage 34-36 ,
(see map 4: Geograph. Institute)

Monday, September 4, 1989, after the Lecture of Hanna Bremer

Informal Meeting with drinks at "Meeting Place" Senckenberganlage 34-36
(see map 4: Geograph. Institute)

Tuesday, September 5, 1989, 19.30 h

Reception by the City of Frankfurt at the "Römer" (Town hall). For this reception you need an invitation card. The invitation card holds information on how to reach the town hall.

Wednesday, September 6, 1989, 19.00h

Reception by the government of the "Land Hessen" at the fair grounds of Frankfurt-Bergen (Berger Marktplatz). Note the change of program announced in the 3rd Circular.

How to reach? Please use the map of Frankfurt and timetable in your conference papers. Take subway line U6 or U7 (Zoo) and go to station *Konstabler Wache* then change to line U4 (*Seckbacher Landstraße*) and get off at station *Bornheim Mitte*. There you will find the Bus 43 (*Bergen*) go to station *Erlenseer Straße / Berger Marktplatz* or take tramway 12 to *Bergen-Straßenbahn* (end of the line) and then you have to walk upwards 10-15 minutes to *Berger Marktplatz*.

Thursday, September 7, 1989, after the General Assembly

Informal Meeting at "Meeting Place", Senckenberganlage 34-36
(see map 4: Geograph. Institute)

Friday, September 8, 1989, 18.30 h

Farewell Party with wine tasting and German sausages at Eberbach Monastery near the Rhine Valley. The departure by bus at 18.30 h near the Conference Center, Gräbstraße (see map 4). Return late in the evening.

CULTURAL PROGRAM

A cultural program for accompanying persons will be organized in cooperation with the City of Frankfurt/Main. Please, request at the registration and information desk.

GENERAL INFORMATION

How to reach the Conference Center?

By subway (see map 2):

From the City (*Konstabler Wache*, *Hauptwache* or *Alte Oper*) to *Bockenheimer Warte* take line U6 (*Heerstraße*) or line U7 (*Hausen*)

By tramway:

From *Hauptbahnhof* to *Bockenheimer Warte* take line 19 (*Ginnheim*).

If you arrive by car (please use maps):

The nearest underground car park (see map 4: Tiefgarage) with respect to the Conference Center is below the University buildings with entrance in *Gräfrstraße*.

Meals

will be served at the Mensa and the Cafeteria (students restaurants) close to the lecture theaters. Prices are moderate (for lunch: DM 4-7).

FIELD TRIPS

The field trips which will take place during the Main Conference are listed on the following pages (cf. 3rd circular). Registered participants of field trips who paid the field trip fees will find special information in their conference papers. Some field trips have still places available. Please request at the registration and information desk.

For all field trips leaving by bus at Frankfurt the start will be "Gräfrstraße", S of the Conference Center (see map 4).

Three- to Six-Days Field Trips after the Conference

After the conference the following field trips will take place:

C3, C4, C6, C10, C12, C14b, D1/D2, D4 (cf. 3rd circular).

Further information you will get from the leaders of field trips.

One-Day Field Trips

F-Field trips (F1, F3, F4, F5, F6, F7, F8, F10) will start on Wednesday, September 6, 1989, 9.00 h at *Gräfrstraße* (see map 4) and end at 19.00 h. The busses will bring you directly to Frankfurt-Bergen where the Reception of the "Land Hessen" takes place.

G-Field trips will start on Saturday, September 9, 1989, 8.00 h (G3) 9.00 h (G1,) and end at *Gräfrstraße* (see map 4) 19.00 h.

Explanation of Abbreviations for field trips

Date:	m	morning
	n	noon
	ee	early evening (ca. 16-18 h)
	e	evening
Cost:	tr	expenses for travel during the field trip from the point of start to the point of the end of the trip
	a	accommodation, two persons sharing a room; single rooms; if available, require a supplement of approximately DM 20.-- to 40.-- per night/please request
	b	breakfast
	hb	half board (normally breakfast and dinner)
	fb	full board
	ex	guidebook (20-150 pages for each field trip)

Three- to Six-Days Field Trips**C3 Western Rhenish Slate Mountains (Eifel and Hunsrück Mts.), Mosel and Saar Valleys**

Penneplains - young volcanism - valley meanders - soil erosion and anthropogenetic slope formation - field experiments

Leaders: Gerold Richter, Trier; J. Müller, Flensburg
 Date: September 9/m - September 12/e, 1989
 Start/End: Frankfurt (Gräbstraße) / Frankfurt
 Cost: DM 370.-- (tr,a,b,ex,maps, tasting of wine)

C4 Middle Rhine Valley and Lower Rhine Basin

Formation of the valley - stratigraphy of Quaternary river terraces and fluvial sediments - man-made changes in river geometry - stratigraphy of loess sediments - eastern Eifel Quaternary volcanism

Leaders: Wolfgang Andres, Marburg; Erhard Bibus, Tübingen;
 Achim Schnütgen, Köln
 Date: September 9/m - September 11/e, 1989
 Start/End: Frankfurt (Gräbstraße) / Köln
 Cost: DM 205.-- (tr,a,b,ex,maps)

C6 Cuesta Landscape of SW-Germany and Karst of the Franconian Alb

W-E-cross-section from Frankfurt to the Frankonian Alb: Variscan basement, Triassic and Jurassic rocks, cuestas and penneplains

Leaders: Karl-Heinz Pfeffer, Dieter Burger, Tübingen
 Date: September 10/m - September 12/e, 1989
 Start/End: Frankfurt (Gräbstraße) / Frankfurt
 Cost: DM 280.-- (tr,a,fb,ex,maps)

C10 Bavarian Alpine Foreland between Rivers Iller and Lech

Geomorphology of Pleistocene glacial and glacialfluvial deposits in Albrecht Penck's type region of the alpine Quaternary glaciations - genesis and stratigraphy - interglacial weathering - late pleniglacial morphogenetic processes by permafrost and subglacial meltwater - present fluvial erosion and accumulation of the dammed Iller river - old towns (Memmingen, Kempten, Mindelheim) and monasteries (Ottobeuren, Irsee)

Leaders: Karl Albert Habbe, Erlangen; Konrad Rögner, Trier
 Date: September 9/m - September 14/ee, 1989
 Start/End: Frankfurt (Gräbstraße) / Frankfurt
 Cost: DM 830.-- (tr,a,fb,ex,maps)

C12 Coastal Environments of the German North and Baltic Sea

Development of coastal landscapes in the Holocene - coastal morphodynamics and recent changes - comparison Wadden Sea and tideless Baltic coast - human influence on coastal change and shore protection

Leaders: Heinz Klug, R. Köster, Horst Sterr, Kiel
 Date: September 11/m - September 14/e, 1989
 Start/End: Kiel/Kiel
 Cost: DM 355.-- (tr,a,b,ex,maps)

C14b Alpine Geomorphological Development

Deglaciation-problems and technical solutions in alpine relief areas of the Upper Rhine valley

Leaders: Jan Rupke, Amsterdam (NL); W. Krieg, Dornbirn (A)
 Date: September 10/e - September 15/afternoon, 1989
 Start/End: Feldkirch (Austria)/Stuttgart
 Cost: DM 445.-- (tr,a,hb,ex)

D1/D2 Geomorphological and Geocological Problems in the Saxon and Brandenburg Regions of the German Democratic Republic

Leaders: Günther Haase, Leipzig; Hans Kugler, Halle; M. Kramer, Dresden;
Gerhard Markuse, Berlin; Heinz Barsch, Potsdam
Date: September 9 - September 14, 1989
Start/End: Frankfurt Hauptbahnhof, 8.00 h, Track 19 (D 455)
Naumburg Bahnhof, 14.01 h / Berlin
Cost: DM 520.-- (tr,a,fb,ex,maps)

Please note:

There is only one excursion to the GDR: D1/D2. This excursion replaces the earlier announced excursions D1 and D2. All participants registered for D1 or D2 have been accepted for participation in this new, combined excursion D1/D2 without extra cost for the additional day.

D4 Swiss Alps

Morphogenesis and morphodynamics in high mountain environments

Leaders: W. Haeberli, M. Gamper, Zürich; H. Kienholz, Bern
Date: September 11/m - September 15/m, 1989
Start/End: Zürich/Zürich
Cost: DM 990.-- (tr,a,hb,ex,maps)

One-Day Field Trips**F1 Geomorphology and Geocology of the Rheingau Region**

Rhine River terraces between Wiesbaden and Rudesheim

Leader: Friderun Fuchs
Date: September 9, 1989, 9.00 - 19.00 h
Start/End: Frankfurt (Gräfrstraße) / Frankfurt
Cost: DM 40.--

F3 Taunus Mountains

Fluvial dynamic processes in a small drainage system under forest cover - Late-Pleistocene and Holocene evolution - measurement of Present-day processes

Leader: Günther Nagel, Frankfurt
Date: September 6, 1989, 9.00 - 19.00 h
Start/End: Frankfurt (Gräfrstraße) / Frankfurt
Cost: DM 40.--

F4 Geomorphology and Geocology in the Surroundings of Frankfurt/Main

Relief and groundwater in the surroundings of the Frankfurt airport - landslides and geocology - relief and soil erosion

Leader: Arno Semmel, Frankfurt
Date: September 6, 1989, 9.00 - 19.00 h
Start/End: Frankfurt (Gräfrstraße) / Frankfurt
Cost: DM 40.--

F5 Paleosoils in the Vogelsberg Area (Tertiary Basaltic Volcano)

Distribution and genesis of Tertiary paleosoils - questions of weathering on basalt - land-use potential in the area of the Tertiary paleosoils

Leader: Norbert Stein, Frankfurt
Date: September 6, 1989, 9.00 - 19.00 h
Start/End: Frankfurt (Gräfrstraße) / Frankfurt
Cost: DM 40.--

F6 Northern Rhine-Hessen

Landscape development with special reference to periglacial glacia formation

Leader: Nordwin Beck, Koblenz
Date: September 6, 1989, 9.00 - 19.00 h
Start/End: Frankfurt (Gräbstraße) / Frankfurt
Cost: DM 40.--

F7 Heidelberg and the Neckar Alluvial Fan

Leader: Roland Mäusbacher, Heidelberg
Date: September 6, 1989, 9.00 - 19.00 h
Start/End: Frankfurt (Gräbstraße) / Frankfurt
Cost: DM 40.--

F8 Holocene and Present-Day Fluvial Dynamics of a Small River (Elsenz) near Heidelberg

Leader: Gerd Schukraft, Heidelberg
Date: September 6, 1989, 9.00 - 19.00 h
Start/End: Frankfurt (Gräbstraße) / Frankfurt
Cost: DM 40.--

F10 Heidelberg Region

Loess stratigraphy - oldest European hominides - geochronology

Leader: Luwig Zöller, Heidelberg
Date: September 6, 1989, 9.00 - 19.00 h
Start/End: Frankfurt (Gräbstraße) / Frankfurt
Cost: DM 40.--

G1 The Landscape of the Margins of the Middle Hardt (Western Boarder Region of the Rhine Rift)

Thermophileous vegetation - mediterranean flora - geomorphology, pedology and climatic conditions for wine-growing including a taste of the "result"

Leaders: Peter Frankenberg, Wilfried Schweinfurth, Mannheim
Date: September 9, 1989, 9.00 - 19.00 h
Start/End: Frankfurt (Gräbstraße) / Frankfurt
Cost: DM 40.--

G3 Geomorphology of the Upper Middle Rhine Valley

Rhine terraces, loess and soils - Tertiary landforms and weathering

Leader: Arno Semmel, Frankfurt
Date: September 9, 1989, 8.00 - 19.00 h
Start/End: Frankfurt (Gräbstraße) / Frankfurt
Cost: DM 40.--

SECTIONS OF LECTURE AND POSTER PROGRAM

Section 1: Geomorphology and Geoecology

Chairmen: J. de PLOEY, Leuven; G. HAASE, Leipzig; H. LESER, Basel

- 1.1 Geomorphology and Ecological Structures
- 1.2 Geomorphology, Soils and Weathering
- 1.3 Soil Erosion
- 1.4 Slopes and Slope Instabilities
- 1.5 Geomorphology, Ecology and Man
- 1.6 Geomorphology and Water
- 1.7 Geomorphic Hazards
- 1.8 Paleogeology/Paleohydrology
- 1.9 High Mountain Geomorphology

Section 2: Applied Geomorphology

Chairmen: M. PECSI, Budapest; G. RICHTER, Trier

- 2.1 Geomorphology and Landuse Planning
- 2.2 Geomorphology in Engineering and Mining
- 2.3 Man-made Landforms
- 2.4 Slope Management, Slope Stabilization and Soil Conservation
- 2.5 Methods used in Applied Geomorphology
- 2.6 Geomorphological Information Systems

Section 3: Geomorphological Theory, Concepts and Methods

Chairmen: J. THORNES, Bristol; F. AHNERT, Aachen

- 3.1 Theoretical Geomorphology and Concepts
- 3.2 Methods in Geomorphology (incl. dating, general experimental geomorphology, field experiments)

Section 4: Neotectonics and Structural Geomorphology

Chairmen: N. MÖRNER, Stockholm; C. D. OLLIER, Armidale; H. BREMER, Köln

- 4.1 Neotectonics and Landforms
- 4.2 Macrolief and Plate Tectonics
- 4.3 Structural Geomorphology
- 4.4 Volcanic Landforms

Section 5: Climatic Geomorphology

Chairmen: A. RAPP, Lund; H. HAGEDORN, Würzburg

- 5.1 General Climatic Geomorphology
- 5.2 Glacial Geomorphology
- 5.3 Periglacial Geomorphology
- 5.4 Mid-latitude Geomorphology
- 5.5 Arid and Semi-arid Geomorphology
- 5.6 Tropical Geomorphology

Section 6: Fluvial Geomorphology

Chairmen: I. DOUGLAS, Manchester; J. HAGEDORN, Göttingen

- 6.1 Fluvial Processes (including erosion rates)
- 6.2 Fluvial Sediments and Sedimentation
- 6.3 Channel Forms and Processes
- 6.4 Floodplain Geomorphology
- 6.5 Drainage Patterns
- 6.6 Fluvial Landform Evolution and Long Term Processes

Section 7: Coastal Geomorphology

Chairmen: R. PASKOFF, Paris; D. KELLETAT, Essen

- 7.1 Tidal Flats, Estuaries, Deltas and Continental Shelves
- 7.2 Coastal Dynamics
- 7.3 Coastal Landform Evolution

Section 8: Karst

Chairman: J. NICOD, Aix-en Provence; M. SWEETING, Oxford;
K. H. Pfeffer, Tübingen

- 8.1 General and High Mountain Karst
- 8.2 Tropical Karst
- 8.3 Mediterranean and Desert Karst
- 8.4 Water in Karst

Section 9: Land Evaluation, Geomorphological Mapping and Remote Sensing

Chairmen: C. EMBLETON, London; H. LIEDTKE, Bochum

- 9.1 Land Evaluation
- 9.2 Geomorphological Mapping
- 9.3 Remote Sensing

CONFERENCE PROCEEDINGS

We will try to publish as many papers as possible. But we won't be able to publish all 400 lectures and 270 posters. The organizing committee has arranged with the publisher of Zeitschrift für Geomorphologie to offer a number of supplementary volumes of this journal, one in general and one for each section. The editors will be the chairmen of the sections. Thus, please, ask your section chairmen about the publication.

There are a few general requirements: The papers should contain original observations and data, not published before. The introduction and discussion should not be longer than 5% of a paper maximum. The form of the manuscript should comply with the Zeitschrift für Geomorphologie in general: informations for authors are regularly printed on the inside cover of the normal issue. There will be a suscription rate with a reduction by 30%, if the whole set is ordered, by 20% for single volumes for orders sent to the publisher still in 1989.

Lecture Sessions and Lecture Halls

	MONDAY Sept., 4 B C	TUESDAY Sept., 5 A B C	THURSDAY Sept., 7 A B C	FRIDAY Sept., 8 A B C*	
SUBSECTION					ROOM
1.1	■ ■				III
1.2	■				IV
1.3		■ ■ ■	■ ■ ■		III
1.4	■	■			IV
1.5		■ ■	■		IV
1.6			■ ■		IV
1.7				■ ■	III
1.8				■	III
1.9				■ ■	IV
2.1	■	■ ■			H 2
2.2		■	■		H 2
2.3			■		H 2
2.4			■	■ ■	H 2
2.5	■				H 2
2.6				■	H 2
3.1		■ ■ ■			H 6
3.2			■ ■		H 6
4.1	■ ■	■ ■ ■			H 7
4.2			■		H 7
4.3			■ ■	■	H 7
4.4				■	H 7
5.1	■				H 4
5.2	■	■ ■ ■	■		H 4
5.3			■ ■	■ ■	H 4
5.4			■		H 3
5.5	■	■ ■ ■			H 3
5.6			■ ■	■	H 3
6.1	■ ■				H 8
6.2		■			H 8
6.3	H 6	■ ■	■ ■	H 6	H 8
6.4			■	■	H 8
6.6			H 6	■ ■	H 8
7.0	■ ■				H 10
7.1			■ ■ ■		H 10
7.2		■ ■ ■			H 10
7.3				■ ■ ■	H 10
8.1	■ ■		■		H 11
8.3			■ ■		H 11
9.1		■ ■			H 11
9.2		■			H 11
9.3				■	H 11

*TIME A: 8.30-10.00 h B: 14.00-15.30 h C: 16.00-17.30 h

Timetable 2nd ICG: Main Conference

Lecture Sessions: Sections, Rooms see special pages; Poster sessions: 1-9 Number of Sections

	Sunday, Sept. 3	Monday, Sept. 4	Tuesday, Sept. 5
8.30-10.00			Lecture Sessions
10.00-10.30		9.15-11.30 Opening Session	Coffee break
10.30-12.00		Room VI	Main Session Room VI
12.00-13.00	Registration (Senckenberganlage 34)	Poster Sessions 1, 8	Poster Sessions 2, 7, 9
13.00-14.00		Lunch time (Meeting of National Delegates, Room 101)	Lunch time
14.00-15.30		Lecture Sessions	Lecture Sessions
15.30-16.00		Coffee break	Coffee break
16.00-17.30		Meeting of the "Working Comm." Senckenberganlage 36 Room 308	Lecture Sessions
17.30-18.00		Poster Sessions 1, 8	Poster Sessions 2, 7, 9
18.00-19.30	Welcoming Reception	Dinner time	
19.30-	Senckenberganlage 34	Lectures: 19.00 A. Semmel Room V 20.15 H. Bremer Room VI	Reception by the City of Frankfurt/M.
		21.30- Informal Meeting Senckenberganlage 34	

Frankfurt/Main 1989, September 3.-8.

Wednesday, Sept. 6	Thursday, Sept. 7	Friday, Sept. 8	
Field Trips	Lecture Sessions	Lecture Sessions	8.30-10.00
F 1	Coffee break	Coffee break	10.00-10.30
F 3			
F 4	Main Session	Main Session	10.30-12.00
F 5	Room VI	Room VI	
F 6	Poster Sessions 3, 5	Poster Sessions 4, 6	12.00-13.00
F 7			
F 8	Lunch time	Lunch time	13.00-14.00
F 10	Lecture Sessions	Lecture Sessions	14.00-15.30
	Coffee break	Coffee break	15.30-16.00
	Lecture Sessions	Lecture Sessions	16.00-17.30
	Poster Sessions 3, 5		17.30-18.00
	Dinner time	18.30 -	18.00-19.30
Reception by the Land Hessen at Frankfurt-Bergen	Lecture: D. Brunsten Room VI	Farewell party with wine tasting session and German Sausages at Eberbach Monastery	19.30-
	20.30- General Assembly		
	Informal Meeting Senckenberganlage 34		

SPECIAL LECTURES

INVITED AND GENERAL LECTURES

OPENING SESSION: Monday, Sept. 4, 1989, 9.15 - 11.30 h Room VI

BARSCH D. (FRG): Geomorphology and Geoecology
(Introductory Lecture of the Opening Session)

PUBLIC LECTURE: Monday, Sept. 4, 1989, 19.00 - 20.00 h Room V

SEMMELE A. (FRG): Frankfurt und sein Umland - geoökologisch gesehen
(Public Evening Lecture / in German)

EVENING LECTURE: Monday, Sept. 4, 1989, 20.15 - 21.15 h Room VI

BREMER H. (FRG): The Relief of Central Europe
(General Evening Lecture / in English)

MAIN SESSION: Tuesday, Sept. 5, 1989, 10.30 - 12.00 h Room VI

GOUDIE A.S. (Great Britain): The Human Impact and Geomorphological
Change: Present and Future
(Invited Lecture to Section 1)

COATES D. (USA): Perspectives on Environmental Geomorphology
(Invited Lecture to Section 2)

MAIN SESSION: Thursday, Sept. 7, 1989, 10.30 - 12.00 h Room VI

PISSART A. (Belgium): Advances in Periglacial Geomorphology
(Invited Lecture to Section 5) ✓

STARKEL L. (Poland): The Fluvial Environment as an Expression of
Geoecological Changes (Invited Lecture to Section 6)

EVENING LECTURE: Thursday, Sept. 7, 1989, 19.30 - 20.30 h Room VI

BRUNSDEN D. (Great Britain): Tablets of Stone? - toward the Ten
'Commandments' of Geomorphology
(Invited Lecture for the General Meeting)

GENERAL ASSEMBLY: Thursday, Sept. 7, 1989, 20.30 - 21.30 h Room VI

MAIN SESSION: Friday, Sept. 8, 1989, 10.30 - 12.00 h Room IV

KIRKBY M. (Great Britain): The Landscape viewed through Models
(Invited Lecture to Section 3)

KAIZUKA S. & Y.OTA (Japan): Tectonic Geomorphology of Active
Continental Margins
(Invited Lecture to Section 4)

SECTION 1: GEOMORPHOLOGY AND GEOECOLOGY

Chairmen: H.LESER, Basel; J.de PLOEY, Leuven; G.HAASE, Leipzig

SUBSECTION 1.1 Geomorphology and Ecological Structures

SESSION: Geomorphology and Ecology: General Problems

Monday, Sept. 4, 1989, 14.00 - 15.30 h, Room III

TIMOFEEV D.A. (USSR): Geoecological Geomorphology: Objects, Problems, Methods

SUN G. (China): Landform and Ecological Environment in the Source Region of the Yangtse River

MEZA-SANCHEZ M. (Mexico): Geomorphology and Ecological Structures in the Basin of Mexico (together with J.F.CERVANTES & G.ALFARO)

FRANCIS C. (Great Britain): The Erosional Ecology of Matorral (together with J.B.THORNES)

SESSION: Ecological Research and Relief Factors

Monday, Sept. 4, 1989, 16.00 - 17.30 h, Room III

GLASSTETTER M. (Switzerland): The Georelief, a Structural Regulator of Biomass and Cast Production by Earthworms (Lumbricidae, Annelida)

MULDER H. (Netherlands): The Role of Vegetation in Stabilizing French Alpine Slopes; The Root System and the Hydrological System

GOMEZ VILLAR A. (Spain): Patterns of Spatial Plant Colonization in Semi-active Alluvial Fans (together with G.MONTSERRAT & J.GARCIA-RUIZ)

SUBSECTION 1.2 Geomorphology, Soils and Weathering

SESSION: Soil and Weathering

Monday, Sept. 4, 1989, 14.00 - 15.30 h, Room IV

MILLER S. (Great Britain): Holocene Landform and Soil Sequences in an Upland Area: Bowderdale, Howgill Fells, Northwest England

→ KOUTANIEMI L. (Finland): Podzolization and Time: a Case Study from Northern Finland

COOKS J. (South Africa): Lichens in the Weathering Regime on Siliceous Material

GERRARD J. (Great Britain): The Nature and Climatic Significance of Earth Hummocks: A Review

SUBSECTION 1.3 Soil Erosion

SESSION: General Problems of Soil Erosion

Tuesday, Sept. 5, 1989, 8.30 - 10.00 h, Room III

GEROLD G. (FRG): Soil-erosion in Relation to Climatic Zones in the Tropics of Bolivia

ZHU JINJIAO (China): Soil Erosion Characteristics and Conservation in South China's Mountainous Areas (together with ZHANG YUSHU / China)

SINGH R.B. (India): Monitoring Soil Loss and Sedimentation Deposition in Indian Perspective

HAMZA A. (Tunisia): Erosion and Land Conservation in Wadi Zenoud Watershed (Central Tunisia)

SESSION: Soil Erosion Research on Arable Land

Tuesday, Sept. 5, 1989, 14.00 - 15.30 h, Room III

PRASUHN V. (Switzerland): The Different Erosion Dynamics of Loess and Clay Soils and the Consequences for Soil Erosion Control (together with D.SCHAUB)

WICHEREK St. (France): Impact of Viticulture on Soil Erosion in the North of Parisian Basin (France)

LAVEE H. (Israel): The Infiltration Characteristics and Erodibility of Soils along an Altitudinal Transect in the Judean Hills and the Implications for Climatic Change Impact Assessment (together with A.C.IMESON, S.PARIENTE & Y.BENJAMINI)

SESSION: Soil Erosion in Catchments

Tuesday, Sept. 5, 1989, 16.00 - 17.30 h, Room III

DE PLOEY J.G. (Belgium): A Scoring System for Rating Catchment Erodibility

KOSTRZEWSKI A. (Poland): Present-day Denudative System of the Upper Parseta Catchment, Western Pomerania, NW Poland

DIOP M. (Japan): Erosion and Channel Modification in the Saba River Basin Chugoku District, Southwestern Japan (together with N.HORI)

JANSKY L. (Czechoslovakia): Soil Erosion and Sedimentation of Small Water Reservoirs in Slovakia

SESSION: Rill Development

Thursday, Sept. 7, 1989, 8.30 - 10.00 h, Room III

AI N. (China): A Mathematical Model of Human Activity on Soil Erosion Process (together with J.XU)

POESEN J.W.A. (Belgium): Effects of Rock Fragment Position in the Soil Top Layer on Infiltration, Runoff and Interrill Erosion Subprocess (together with F. INGELMO-SANCHEZ / Spain)

CALVO-CASES A. (Spain): Process Interactions and Rill Development on Badland and Gully Slopes (together with A.M.HARVEY / Great Britain)

EVERAERT W. (Belgium): Empirical Relationships on the Transport Capacity of Interrill Flow

SESSION: Gully Erosion

Thursday, Sept. 7, 1989, 14.00 - 15.30 h, Room III

DUBEY A. (India): Rill and Gully Erosion in Sub-humid Tropical Environment of India (together with S.SINGH)

TRIMBLE S.W. (USA): Gully Erosion in the Driftless Area of Mid-North America during the Period since European Occupance

BECKEDAHL H.R. (South Africa): Gully Morphology as a Function of Physical Soil Characteristics

GOVERS G.L. (Belgium): Sediment Transport and Detachment by Overland Flow

SESSION: Model Problems in Soil Erosion Research

Thursday, Sept. 7, 1989, 16.00 - 17.30 h, Room III

HUDSON C.A. (South Africa): Modification of the Soil Loss Estimation Model for Southern Africa for Application in the Drakensberg of South Africa

SCHMIDT J. (FRG): Mathematical Simulation of Soil Erosion Using the Momentum Flux Concept

DE ROO A.P. (Netherlands): Attempts to Validate the Answers Erosion Model (together with L.HAZELHOFF & P.A.BURROUGH)

SCOGING H.M. (Great Britain): A Dynamic Model of Agricultural Terrace Degradation on Miocene Marls in South East Spain and its Management Implications (together with D.A.Thompson)

SUBSECTION 1.4 Slopes and Slope Instabilities**SESSION: Field Work Problems I**

Monday, Sept. 4, 1989, 16.00 - 17.30 h, Room IV

ROUSE W.C. (Great Britain): Microseismic Monitoring of Landslides (together with S.WILSON & P.STYLES)

GUEREMY P.M. (France): Mass Movement and Landform Evolution in the Barronies Mountains (French Southern Alps) (together with A.MARRE & R.LHENAFF)

OYAGI N. (Japan): Formulation of Slope Instability for Geomorphic Reasoning (together with S.HATANO)

NIWA S. (Japan): A Morphometric Study on Transition of Shallow Slid Scars in Temperate Humid Region (together with S.HATANO & S.TANIOKA)

SESSION: Field Work Problems II

Tuesday, Sept. 5, 1989, 8.30 - 10.00 h, Room IV

RASHIDIAN K. (Great Britain): The Correlation between Creep Rate and Controlling Variables

ZEZERE J.L. (Portugal): Mass Movements and Slope Instability, Lisbon Region (Portugal)

DUMAS B. (France): Movement of Coarse Debris by Hydraulic Processes on Hillslopes in the French Mediterranean Southern Alps (together with J. RAFFY)

DERBYSHIRE E. (Great Britain): Research and Control of Landslides and Debris Flows in the Loess Region of Gansu Province, China (together with W.JINGTAI, A.BILLARD, D.K.C.JONES, T.MUXART & L.GUYOT)

SUBSECTION 1.5 Geomorphology, Ecology and Man**SESSION: Ecosystem Interactions I**

Tuesday, Sept. 5, 1989, 14.00 - 15.30 h, Room IV

KAINZ M. (FRG): Morphological and Ecological Changes Induced by Land-Consolidation

VALADAS B. (France): Morphological Impacts of Timber-Cutting in Submediterranean Middle Mountains, the example of the River Latte Catchment, Mont Lozere, South of the Massif Central, France (together with P.BERNARD-ALLEE, C.COSANDEY & T.MUXART)

SWANSON F.J. (USA): Geomorphology-ecosystem Interactions along Mountain Streams (together with G.E.GRANT)

ROQUERO E. (Spain): The Nijar Dam (Almeria, Spain): A Case Study of Geomorphic Influence on Accelerated Siltation

SESSION: Ecosystem Interactions II

Tuesday, Sept. 5, 1989, 16.00 - 17.30 h, Room IV

BLANCK J.P. (France): Some Types of Environmental Degradation in African Sahel (together with J.F.L.TRICART / France)

LEWIS L.A. (USA): Erosion, Agriculture and Ecological Relations in Rwanda

KOZARSKI S. (Poland): The Late Quaternary Climate and Human Impact on Aeolian Processes in Poland (together with B.NOWACZYK)

HAIDOUTI C. (Griechenland): Distribution of Airborne Fluoride in Soils and Natural Vegetation around and Alumina Production Plant (together with C.CHRONOPOULOU & J.CHRONOPOULOS)

SESSION: Landscape Ecosystem Changes

Thursday, Sept. 7, 1989, 8.30 - 10.00 h, Room IV

TRICART J. (France): The Abandonment of a Pre-hispanic Settlement at Naranja de Tapia (Zacapu Michoacan, Mexico), is it the Result of Drastic Soil Erosion ? (together with D. MICHELET)

HUGHES P.J. (Papua New Guinea): Human Induced Erosion in a Highlands Catchment in Papua New Guinea: the Prehistoric and Contemporary Records (together with M.E.SULLIVAN & D.YOK)

→ BARSCH H. (GDR): Recent Changes of Relief and Soils in the Havel Region west of Potsdam (together with R.WEISSE)

BASU S.R. (India): A Study of the Impact of Landslides on the Fluvial Processes of the Rivers Lish and Gish of the Darjeeling Himalayas

SUBSECTION 1.6 Water in Geoecosystems

SESSION: Hydrological Processes in Geoecosystems

Thursday, Sept. 7, 1989, 14.00 - 15.30 h, Room IV

EGGENBERGER C. (Switzerland): The Role of Solutes in Precipitation in the Denudation Process, a Catchment Scale Research in the Jura Mountains, Switzerland

ELSENBEER H. (USA): Hydrologic Processes in a Tropical Rainforest Catchment and their Implications for Soil Erosion and Weathering (together with D.K.CASSEL & S.W.BUOL)

DENGLER L. (USA): Geometry of Unchanneled Valleys (together with D.MONTGOMERY)

BRANDT J. (Great Britain): Raindrop Sizes under Vegetation

SESSION: Relief Development and Water Dynamic

Thursday, Sept. 7, 1989, 16.00 - 17.30 h, Room IV

DE BOER D.H. (Canada): Sediment Dynamics and Spatial Scale in Semi-arid Badland Drainage Basins

FERNANDES N.F. (Brazil): Subsurface Hydrology of 'Rampa Complexes' and Gullying: Bananal, Sao Paulo (together with A.L.COELHO NETTO)

ONDA Y. (Japan): Influence of Water Storage Capacity in Regolith Zone on Hydrological Characteristics and Slope Processes in granitic hills

SUBSECTION 1.7 Geomorphic Hazards

SESSION: Recent Geomorphic Hazards

Friday, Sept. 8, 1989, 8.30 - 10.00 h, Room III

KEISER A F (USA): The 'Catastrophic' Storm and Flood of November 1985 (together with M.L.Mc KOY, J.S.KITE)

KIENHOLZ H. (Switzerland): Bedload Budget in Swiss Mountain Torrents with Respect to the 1987 Disasters (together with C.LEHMANN)

BUTLER D.R. (USA): Potential Catastrophic Flooding from Landslide-dammed Lakes, Glacier National Park, Montana, USA (together with G.P.MALANSON & J.G.OELFKE)

BENAZZOUEZ M.T. (Algeria): An Assessment on the Geomorphological Hazard and the Costs of the Geomorphological Risks in the Constantine Area (Algeria)

SESSION: Ancient Geomorphic Hazards

Friday, Sept. 8, 1989, 14.00 - 15.30 h, Room III

MIZUTANI T. (Japan): Topographic Factors and Rainfall Intensities for Assessing Vulnerability to Torrential Floods on Valley Plains

STRUNK H. (FRG): Frequency Distribution of Debris Flows in the Alps since the 'Little Ice Age'

MOJICA J. (Columbia): The Origin of the Lagunilla Valley as Consequence of Repeated Mud Flows (Dept. Tolima, Colombia) (together with E.JORDAN / FRG)

KASHIWAYA K. (Japan): Reconstruction of Changes in Erosional Force Based on Treering Information in Rokko Mountains, Japan (together with T.OKIMURA)

SUBSECTION 1.8 Paleohydrological Systems**SESSION: Paleohydrological Systems**

Friday, Sept. 8, 1989, 16.00 - 17.30 h, Room III

PACHUR H.J. (FRG): Paleolimnology of the Berlin Lakes

TAISHI H. (Japan): Sedimentary Anomaly and Sedimentation Process in Lake Biwa (together with S.OKUDA, T.SHIKI & K.KASHIWAYA)

ROTNICKI K. (Poland): Estimation of Late Glacial and Holocene Runoff, Precipitation and Evaporation Based on the Retrodiction of the Discharges of Meandering Rivers

KASHIWAYA K. (Japan): Postdiction of Past Erosional Environment Based on Grain Size Variation in Pleistocene Lake Sediments (together with K.FUKUYAMA & A.YAMAMOTO)

SUBSECTION 1.9 High Mountain Geomorphology**SESSION: Geomorphic Processes and Vegetation in High Mountains**

Friday, Sept. 8, 1989, 8.30 - 10.00 h, Room IV

DEL BARRIO G. (Spain): High Mountain Terracettes as an Interaction between Sediment Transport and Plant Growth (together with PUIGDEFABREGAS)

PEREZ F.L. (USA): Processes of Turf Exfoliation in the Venezuelan Andes

SULLIVAN M. (Papua New Guinea): Patterned Micro-relief in Grasslands in Cold Upland Valleys in Papua New Guinea (together with P.J.HUGHES)

SESSION: Recent Geomorphic Processes in High Mountains

Friday, Sept. 8, 1989, 14.00 - 15.30 h, Room IV

JULIAN M. (France): Rockslides and Water Infiltration: Three Typical Examples in the French Western Alps

GARCIA-RUIZ J.M. (Spain): Coarse Sediment Transport in an Experimental High Mountain Catchment of Central Pyrenees, Spain (together with R.MATTINEZ-CASTROVIEJO & J.C.DIEZ-MONUX)

TIANCHI L. (Nepal): Natural Dams in the Hindu Kush-Himalaya Region

Handwritten notes:
 8⁵⁰ Kiehlh Scher Ren III
 9⁴⁰ K.H. Schuster H2
 14 Scher H10
 14²⁰-15³⁰ Perforat H4
 14⁴⁰ Rachtel H10
 16⁰⁰ Rachtel Ren III
 16²⁰ Hfalt

SECTION 2: APPLIED GEOMORPHOLOGY

Chairmen: G. RICHTER, Trier; M. PECSI, Budapest

SUBSECTION 2.1 Geomorphology and Land Use Planing

SESSION: Geomorphology and Land Use Planning I

Monday, Sept. 4, 1989, 16.00 - 17.30 h, Room H 2

GARLAND G.G. (South Africa): Geomorphic Inputs into Landuse Planning in South Africa

ALEMAYEHU N.K. (Ethiopia): The Role of Geomorphology in Land Use Planning - Ethiopian Experience

FANIRAN A. (Nigeria): The Use of River Basins for Long-Term Environmental Planning and Mangagement : the Example of Nigeria

TRICART J. (France): Ecogeography of the Niono-Kogoni Districts of Office du Niger, Mali, as a Framework for their Management (together with J.-P.BLANCK)

SESSION: Geomorphology and Land Use Planning II

Tuesday, Sept. 5, 1989, 8.30 - 10.00 h, Room H 2

RAI R.K. (India): Classification of Landform Units and their Geomorphic Characteristics in Meghalaya Plateau, India

PANDEY R.S. (India): Geomorphic Responses and Landuse Planing in Bundelkhand Region, U.P. India (together with T.A.SHAH)

CSORBA P. (Hungary): Geomorphological Aspects of the Regional Ecological Tendencies - Example of Tokaj, Great Hill

SESSION: Geomorphology and Land Use Planning III

Tuesday, Sept. 5, 1989, 14.00 - 15.30 h, Room H 2

GREEN C.P. (Great Britain): Geomorphological Conservation Assessment of Coastal Shingle System (together with D.F.M. Mc GREGOR)

YATSUKHNO V. (USSR): Morphographic Analysis of Hummocky-Moraine Topography for Planning of Agricultural Landscapes

ALAM M.S. (Bangladesh): Application of Remote Sensing in the Coastal Wet Land Aquaculture Development Planning of Bangladesh (together with S.D.SHAMSUDDIN)

KERTESZ A. (Hungary): Assessment of the Physical Environment from Agricultural Aspect by Factor Analysis

SUBSECTION 2.2 Geomorphology in Engineering and Mining

SESSION: Geomorphology in Engineering and Mining I

Tuesday, Sept. 5, 1989, 16.00 - 17.30 h, Room H 2

GAGEN P. (Great Britain): Landform Replication Experiments on Quarried Limestone Rock Slopes in the English Peak District (together with J.GUNN)

EAST J. (Australia): Application of Natural Hillslope Characteristics to the Design of Rehabilitated Mine Structures in Tropical Northern Australia (together with R.F. CULL, C.J.UREN, P.M.CURLEY & C.J. UNGER)

SESSION: Geomorphology in Engineering and Mining II

Thursday, Sept. 7, 1989, 8.30 - 10.00 h, Room H 2

THOMAS M.F. (Great Britain): The Geomorphology of some Quaternary Placer Deposits (together with M.B.THORP)

HAIDOUTI C. (Griechenland): Mercury Contamination of Soils in Some Industrial Areas of Athens

SUBSECTION 2.3 Man-made Landforms

SESSION: Urban Geomorphology

Thursday, Sept. 7, 1989, 14.00 - 15.30 h, Room H 2

GARDINER V. (Great Britain): Urban geomorphology in India

DING X. (China): Urban Geomorphology of China

CERVANTES- BORJA J.F. (Mexico): Environmental Planning by Geoecodynamic Assessment in the Basin of Mexico (together with M.MEZA, R.LOPEZ & F.ZIGRAI)

RIZZO V. (Italy): An example of Geomorphology Applied to the Archeology: Gryphon Hill in Bisignano (Cosenza, Italy) (together with M.PANIZZA)

SUBSECTION 2.4 Slope Management, Slope Stabilization and Soil Conservation

SESSION: Slope Dynamics and Slope Management I

Thursday, Sept. 7, 1989, 16.00 - 17.30 h, Room H 2

ALLISON R.J. (Great Britain): Geotechnical Properties of Hard Rock Masses and their Association with Slope Form (together with A.S.GOUDIE)

KASHIWAYA K. (Japan): An Analysis of Landslide Environment during Past 100 Years from Pond Sediments in Rokko Mountains, Japan

PALMEIRO DO AMARAL C. & F. (Brazil): The Environmental Impacts Derived by the Slummy Process in Rio de Janeiro Slopes, Brazil

SESSION: Slope Dynamics and Slope Management II

Friday, Sept. 8, 1989, 8.30 - 10.00 h, Room H 2

VANNOCCI P. (Italy): Landsliding Evolution of the Slopes in the Hilly Region of Upper Valdarno (Tuscany, Italy) (together with P.FOCARDI & C.A.GARZONIO)

KAPULE D.E. (Kenia): Slope Instability and Landuse Planning: a Case Study of the Upper Sele Valley, Southern Italy and Murang'a District, Kenya

EAST J. (Australia): Prediction of the Geomorphological Stability of Rehabilitated Uranium Mine Sites from Events in the Late Quaternary (together with G.C.NANSON)

BILLARD A. (France): Geomorphology and Landuse in the Lanzhou Region of Gansu Province, China (together with T.MUXART & DERBYSHIRE E.)

SESSION: Slope Dynamics and Slope Management III

Friday, Sept. 8, 1989, 14.00 - 15.30 h, Room H 2

BURNS S.F. (USA): A Predictive Failure Model for Slopes Containing Shrink-Swell Clays (together with J.W.MUTCHLER, S.M.SMITH)

PAL A. (India): The Study of the Slope Stability Charactersitics in Fluvial Terrain Evaluation and Management: a Case Study of Darjiling District, W. B. India

OKIMURA T. (Japan): An Expert System for Predicting the Probable Surface Failure of Mountain Slope Appeared during Heavy Rainfall (together with Y.MURAKI)

VAN ASCH Th. (Netherlands): An Information System for Large Scale Quantitative Hazard Analyses of Slope Stability (together with B.R.KUIPERS, D.J.VAN DER ZANDEN & J.P.T.CARIS)

SUBSECTION 2.5 Methods used in Applied Geomorphology

SESSION: Methods used in Applied Geomorphology

Monday, Sept. 4, 1989, 14.00 - 15.30 h, Room H 2

→ PECSI M. (Hungary): Environmental Geomorphology in Hungary

SKOPEK V. (Czechoslovakia): Method of Anthropoecological Stabilization of Landscape and its Interpretation (together with J.VACHAL)

PANIZZA M. (Italy): Geomorphological Assets Evaluation (together with S.PIACENTE)

SUBSECTION 2.6 Geomorphological Information Systems

SESSION: Geomorphological Information Systems

Friday, Sept. 8, 1989, 16.00 - 17.30 h, Room H 2

READING A.J. (Great Britain): A Geographic Information System (G.I.S.) for the Prediction of Landsliding Potential and Hazard in South-West-Greece

WOLFE J.W. (USA): Spatial Modeling of Erosion and Deposition using a PC Geographic Information System

SUBRAMANYAN V. (India): Geomorphc Information Sytem - a Case Study Around Tirupati, Andhra Pradesh, India (together with C.V.MURTY & P.VENKATACHALAM)

RAPER J. (Great Britain): The Use of a Geomorphological Information System to Investigate Landform-Sediment Relationships in Glaciated Valleys

SECTION 3: GEOMORPHOLOGICAL THEORY, CONCEPTS AND METHODS

Chairmen: F.AHNERT, Aachen; J.THORNES, Bristol

SUBSECTION 3.1 Theoretical Geomorphology and Concepts

SESSION: Geomorphological Systems and their Properties

Tuesday, Sept. 5, 1989, 8.30 - 10.00 h, Room H 6

SLAYMAKER O. (Canada): Pluralism and Experimental Geomorphology

SCHEIDEGGER A.E. (Austria): Entropy of Landscapes (together with M.LECHTHALER-ZDENKOVIC)

AI N. (China): Entropy of a Drainage-System

SESSION: Simulation Models and Statistical Approaches

Tuesday, Sept. 5, 1989, 14.00 - 15.30 h, Room H 6

YONECHI F. (Japan): 'Smooth model' and 'Rough model' in Geomorphology

AHNERT F. (FRG): Relief Reduction and the Spatial Distribution of Denudation

FREDI P. (Italy): Relations between Morphometric Characteristics and Denudational Processes in some Drainage Basins of Italy (together with S.CICCACCI, L. D'ALESSANDRO & E.LUPIA PALMIERI)

SIEGBURG W. (FRG): A Statistical Approach to Relief Development and Morphogenetic Classification by Means of an Analysis of Residuals

SESSION: Geomorphological Concepts

Tuesday, Sept. 5, 1989, 16.00 - 17.30 h, Room H 6

KEMP A. U.K. Simulation of the Free Boundary Overfall in Relation to Gully Head Migration and some Practical Experiences (together with J.B. THORNES & J. EASTWOOD)

CINQUE A. (Italy): Marine Terraces on Tectonically Active Coasts: a Computer Simulation Model (together with A.CAMMISA)

TASHCHI S.M. (USSR): Modelling of Geomorphological Effect of Diapirism (together with V.V.ERMOSHIN)

SUBSECTION 3.2 Methods in Geomorphology (Dating, Experiments etc.)

SESSION: Geomorphological Experiments and Measurements

Thursday, Sept. 7, 1989, 8.30 - 10.00 h, Room H 6

SHERMAN D.J. (USA): Measuring Aeolian Sediment Transport

ROBERTS M.C. (Canada): The Application of High Resolution, Seismic Reflection Profiling to Geomorphic Problems (together with H.JOL)

WINCHESTER V. (Great Britain): Lichenometry: its Use and Misuse; some Factors Affecting the Dating Range and the Shape of the Growth Curve

SESSION: Laboratory Dating Methods

Thursday, Sept. 7, 1989, 16.00 - 17.30 h, Room H 6

PRICE D.M. (Australia): Thermoluminescence Dating of Quaternary Sediments, the Thermoluminescence Technique (together with G.C.NANSON)

NANSON G.C. (Australia): Thermoluminescence Dating of Quaternary Alluvium, Recent Development (together with D.M.PRICE)

ROBERTS R.G. (Australia): Thermoluminescence Dating of Late Quaternary Deposits in Northern Australia (together with T.J.EAST)

LEES B. (Australia): Reconnaissance Thermoluminescence Dating of Northern Australian Coastal Dune Systems

ZOELLER L. (FRG): Thermoluminescence Dating of Sediments - Application and Use in Geomorphology and Quaternary Stratigraphy

SECTION 4: NEOTECTONICS AND STRUCTURAL GEOMORPHOLOGY

Chairmen: H.BREMER, Köln; N.MÖRNER, Stockholm; C.D.OLLIER, Armidale

SUBSECTION 4.1 Neotectonics and Landforms

SESSION: Neotectonics and Landforms I

Monday, Sept. 4, 1989, 14.00 - 15.30 h, Room H 7

VOGT H. (France): Morphotectonics of the SW-Border of the Rhinegraben

SZULC J. (Poland): Some Remarks on the Tectonics and Karst Properties of the Guilin Region, South China

L.BRANCACCIO L. (Italy): Geomorphology and Neotectonic Evolution of a Sector of the Tyrrhenian Flank of Southern Apennines, Region of Naples, Italy (together with A.CINQUE, C.ROSSKOPF, F.RUSSO & N.SANTANGELO)

RAFFY J. (France): Difficulties with Connecting Geomorphological Transects and Dating Shorelines in the Capo Vaticano Peninsula (South Italy) (together with B.DUMAS, P.GUEREMY, P.HEARTY & R.LHENAFF)

SESSION: Neotectonics and Landforms II

Monday, Sept. 4, 1989, 16.00 - 17.30 h, Room H 7

SCHROEDER B. (FRG): Landscape Development During the Neogene in Volcanic Areas of NE-Bavaria

DEFFONTAINES B. (France): Apports de l'Informatique a la Morpho-Neotectonique Application au Modele Numerique de Terrain (Strasbourg-France)

ZUCHIEWICZ W. (Poland): Morphotectonics of the Polish Flysch Carpathians: a Geomorphological Approach

KAIZUKA S. (Japan): Rates of Mountain Uplift Estimated from River and Valley Features in Central Japan

SESSION: Neotectonics and Landforms III

Tuesday, Sept. 5, 1989, 8.30 - 10.00 h, Room H 7

BRUM FERREIRA A.de (Portugal): Neotectonics in Northern Portugal: An Geomorphological Approach

GRACIA PRIETO J. (Spain): A Model of Genesis and Evolution of Erosion Surfaces in a Mediterranean Context, Examples from the Iberian Chain, Spain

MAGAGNOSC J.S. (France): Neotectonics of Western Dahra (Algeria)

UFIMTSEV G.F. (USSR): Neotectonic Orogenic Belts of Inner Asia

SESSION: Neotectonics and Landforms IV

Tuesday, Sept. 5, 1989, 14.00 - 15.30 h, Room H 7

BAKKER J.G. (Netherlands): Neotectonic Control on Sedimentology of Pleistocene Fluvial Deposits in the Intramontane Pitalito Basin, Columbia

EROL O. (Turkey): Geomorphology Evolution of the Taurus Mountains, Southern Anatolia, Turkey

DAVEAU S. (Portugal): Landforms Development in Portuguese Central Ridge

YANG S. (China): The Basic Feature of the Landforms of Heilongjiang Province and its Forming Factors (together with GAO ZHENGCAO)

SESSION: Neotectonics and Landforms V

Tuesday, Sept. 5, 1989, 16.00 - 17.30 h, Room H 7

FARHOUDI G. (Iran): The Morphogenic Phase of the Alborz Mountain Ranges of Northern Iran

LERANOZ B. (Spain): Quaternary Deformations on Tertiary Gypsums and Marls in the Central Ebro Basin, Spain

XU M. (China): Preliminary Study of the Neotectonic Movement of the Nanyang Valley

KHUDYAKOV G.I. (USSR): Constructive and Destructive Tectogenesis and Relief Formation (together with R.I.NIKONOVA)

SUBSECTION 4.2 Macorelief and Plate Tectonics**SESSION: Macorelief and Plate Tectonics**

Thursday, Sept. 7, 1989, 8.30 - 10.00 h, Room H 7

→ LIDMAR- BERGSTRÖM K. (Sweden): Phanerozoic Tectonics in Southern Sweden

PEULVAST J.P. (France): Structural Geomorphology and Morphotectonic Evolution in an Uplifted Rifted Margin: The Scoresby Sund Area, Greenland

BIRKENHAUER J.A. (FRG): Plate Tectonics and Geomorphology, The Case of the Thalassoplains

ZHANG D. (China): An Analysis of the Regionally Geomorphic System of the Xianshuihe Fault-Belt of Western Sichuan, China

SUBSECTION 4.3 Structural Geomorphology**SESSION: Structural Geomorphology I**

Thursday, Sept. 7, 1989, 14.00 - 15.30 h, Room H 7

EHLEN J. (USA): Significant Geomorphic and Petrographic Relations with Joint Spacing in the Dartmoor Granite, Southwest England

REGNAULD H. (France): Plate Movements and Morphological Systems Example of the Portuguese Continental Slope

DRAMIS F. (Italy): Deep-Seated Gravitational Slope Deformations and Neotectonics in Italy (together with G.M.SORRISO-VALVO)

ZHANG H. (China): Application of the Tectonic Landform in the Study of Seismo-Geology in the Coastal Area of South China

SESSION: Structural Geomorphology II

Thursday, Sept. 7, 1989, 16.00 - 17.30 h, Room H 7

BRONGULEYEV V.V. (USSR): Relationship of Different Scale Landforms with Deep-Seated Structures

KULAKOV A.P. (USSR): Gigantic Morphostructures of Central Type - a New Object of Geomorphological Studies

LILIENBERG D.A. (USSR): Recent Endodynamics and Relief

SALLOUM G.M. (Egypt): Geomorphology and Structure of Cairo-Suez Area, Egypt

SESSION: Structural Geomorphology III

Friday, Sept. 8, 1989, 8.30 - 10.00 h, Room H 7

LU YANCHOU (China): Study of Structural Geomorphology and Neotectonics in the Malingshan Hill Chain, Shandong Province, China

AUGUSTIN C.H. (Brazil): Structural control on Slope Form and Evolution in the Serra do Espinhaco, Minas Gerais Brazil

MILLS H.H. (USA): Caprocks and the Evolution of Strike-Ridge Mountains in the Valley and Ridge Province, Virginia USA

SCHMIDT K.H. (FRG): Lithological Differentiation of Structural Landforms on the Colorado Plateau, USA Z

SUBSECTION 4.4 Volcanic Landforms**SESSION: Volcanic Landforms and Tectonics**

Friday, Sept. 8, 1989, 14.00 - 15.30 h, Room H 7

WANG Y. (China): The Volcanic Coast and Tectonic Activities of Northwestern Hainan Island, China (together with ZHOU, L.)

REFFAY A.M. (France): Enclosed Hollows on Basalt Lava Flows

LUPIA PALMIERI E. (Italy): Some Relations between Morphological Characteristics and Geological Structure in the Vulsini Volcanic Complex (Northern Lazio, Italy) (together with G.BUONASORTE, S.CICCACCI, D. DE RITE & P.FREDI)

MOHAMMAD M.R. (Egypt): Minor Lineations and Fracturing: Field and Air Photographic Analysis in Southwestern Sinai, Red Sea Province

SECTION 5: CLIMATIC GEOMORPHOLOGY

Chairmen: H.HAGEDORN, Würzburg; A.RAPP, Lund

SUBSECTION 5.1 General Climatic Geomorphology

SESSION: General Climatic Geomorphology

Monday, Sept. 4, 1989, 14.00 - 15.30 h, Room H 4

ABELE G. (FRG): The Interdependence of Elevation, Relief and Climate on the Western Slope of the Andes

YAMAMOTO A. (Japan): Periodicities of Grain Size Parameters Seen in the 1.400m Core Sediments from Lake Biwa (together with K.KASHIWAYA, K.FUKUYAMA & H.TAISHI)

SKRILNIK G.P. (USSR): Dynamic Aspects of Climatic Geomorphology

SADAH A. (Saudi-Arabia): The Mantle Characteristics of Some Granitic Pediments in the Al Baha Region, Western Saudi Arabia (together with P.VINCENT / Great Britain)

SUBSECTION 5.2 Glacial Geomorphology

SESSION: Glacial Geomorphology I

Monday, Sept. 4, 1989, 16.00 - 17.30 h, Room H 4

X BÖSE M. (FRG): Glacial Morphology and Internal Structures of Landforms - Examples from an Area Reshaped During the Weichselian Glaciation

HART J. (Great Britain): The Geology and Dynamics of Ice Sheet Coalescence (together with R.C.A.HINDMARSH)

HASELTON G.M. (USA): Late Wisconsin Glacial Stratigraphy, Northern White Mountains, New Hampshire, USA

ROGERSON R.J. (Canada): Assessing the Late-Wisconsinan Ice Maximum in Northern Labrador, Canada

SESSION: Glacial Geomorphology II

Tuesday, Sept. 5, 1989, 8.30 - 10.00 h, Room H 4

EVANS I.S. (Great Britain): The Diverse Development of Glacial Cirques

GANGLOFF P. (Canada): Geomorphological Evidence of a Younger Dryas Event in Southern Quebec/Canada (together with B.HETU)

GARDNER J.S. (Canada): Temperature Conditions in Glacier Headwall Weathering Zones

ST.-ONGE D.A. (Canada): Geomorphology of Arctic Glacial Landforms and Buried Glacier Ice (together with J.Mc MARTIN)

SESSION: Glacial Geomorphology III

Tuesday, Sept. 5, 1989, 14.00 - 15.30 h, Room H 4

KAITANEN V.M. (Finland): Relationship between Ice-Sheet Dynamics and Bedrock Residuals on Dissected Plateau Areas in Finnish Lapland North of 69° Latitude

Grosswald M.G. (USSR): *Glacial Landforms and former Glaciation on the northeastern outskirts of Siberia*
LAWSON D.E. (USA): Subglacial Hydrology and Sedimentation, Matanuska Glacier, Alaska

MÄUSBACHER R. (FRG): Present-day Sediment Transport and Holocene Lacustrine Sequences, King George Island, Antarctica

SHI YAFENG (China): Last Glaciation and Maximum Glaciation on the Qinghai-Xizang Plateau.

SESSION: Glacial Geomorphology IV

Tuesday, Sept. 5, 1989, 16.00 - 17.30 h, Room H 4

DE GRAAFF L. (Netherlands): Pleistocene Deposits in Vorarlberg (Western Austria)

BURGA C.A. (Switzerland): The Southrätian Alps in the Late Würm-Glacial Period

EVANS D.J. (Canada): The Style and Chronology of High Latitude Glaciation, Northwest-Ellesmere Island, N.W.T., Canada

HARBOR J.M. (USA): Numerical Modelling of Glacial Valley Development - U-Shaped Cross-Sections and Stepped Long-Profiles (together with B.HALLET)

SESSION: Glacial Geomorphology V

Thursday, Sept. 7, 1989, 8.30 - 10.00 h, Room H 4

HOFMANN J. (FRG): Investigations on Present and Former Periglacial and Glacial Features in Central Helan Shan (Inner Mongolia/China)

DIXON J.C. (USA): A Model of the Geochemical System of the Alpine Geomorphic Process Suite

THOURET J.C. (France): Stratigraphy, Chronology and Paleoecology of the Last Glaciation, Central Cordillera, Colombia (together with T.VAN DER HAMMEN, B.SALOMONS & E.JUVIGNE)

ZHENG B. (China): Contention over the Existence of a Large Ice Sheet on the Qinghai-Xizang Plateau during Quaternary Time

SUBSECTION 5.3 Periglacial Geomorphology**SESSION: Periglacial Geomorphology I**

Thursday, Sept. 7, 1989, 14.00 - 15.30 h, Room H 4

HARRY D.G. (Canada): Groundice and Permafrost Terrain Response to Environmental Change: Examples from Northern Canada

DIXON J.C. (USA): Permafrost and 'Diagnostic Landforms' in North Lapland

KING L. (FRG): Frost Weathering and Soil Temperatures in Discontinuous Permafrost Areas, Gornergrat Wallis, Swiss Alps

STÄBLEIN G. (FRG): Erosion under Cryogenic Conditions

SESSION: Periglacial Geomorphology II

Thursday, Sept. 7, 1989, 16.00 - 17.30 h, Room H 4

CRADDOCK R.A. (USA): The Frost Sorting Phenomenon: Frost Push Versus Frost Pull

VAN VLIET-LANOË B. (France): Differential Heaving, Loadcasting and Convection: Converging Mechanisms - The Origin of Cryoturbations

FRENCH H.M. (Canada): The Geomorphology of Unglaciated Periglacial Terrain: Barn Ranges, Northern Yukon, Canada (together with D.G.HARRY)

HALL K.J. (South Africa): Rock Weathering and Soil Formation in the Maritime Antarctic: An Integrated Study on Signy Island (together with D.W.H.WALTON)

SESSION: Periglacial Geomorphology III

Friday, Sept. 8, 1989, 8.30 - 10.00 h, Room H 4

ANDRE M.F. (France): Geomorphic Impact of Spring Avalanches in Northwest Spitsbergen (Kongsfjorden, 79 Grad N)

CHMAL H. (Poland): Solifluction Slopes and Rock Glaciers - the Mass Movement in the Hornsund Area, Spitsbergen

LUCKMAN B.H. (Canada): Debris Flow and Snow Avalanche Landforms in the Lairig Ghru, Scotland

RITTER J.B. (USA): Grezes Litees in the Valley and Ridge Province of Central Pennsylvania, USA: Regional Distribution, Morphology and Depositional Processes (together with T.W.GARDENER, J.C.BELL, K.F.CONNORS, N.M.PINTER & C.A.SHUMAN)

SESSION: Periglacial Geomorphology IV

Friday, Sept. 8, 1989, 14.00 - 15.30 h, Room H 4

DYKMANS J.W. (Netherlands): Eolian Deposits and Landforms in a Periglacial Environment, Sondre Stromfjord, West Greenland

SEPPÄLÄ M. (Finland): Deflation as a Geomorphic Agent in Arctic Environment

MIEHE G. (FRG): Gelideflation and Climatic Changes in Southern Tibet

HEYSE I. (Belgium): Aeolian Late Glacial Valleydamming in Northern Belgium

SUBSECTION 5.4 Mid-latitude Geomorphology**SESSION: Mid-latitude Geomorphology**

Thursday, Sept. 7, 1989, 8.30 - 10.00 h, Room H 3

ETLICHER B. (France): Open Work Talus Slope Deposits in the French 'Massif Central'

HETU B. (Canada): Stratified Scree Slope Accumulation in a Forest Environment
(Gaspe Peninsula Quebec, Canada)

WENZENS G. (FRG): Influence of Tectonics and Climate on the Quaternary
Pediplanation in Southeastern Spain

NOMURA R. (Japan): A Study on the Mechanism and Chronology of the Debris
Slopes in Southwest Japan (together with TANAKA, S. & S.INQUE)

SUBSECTION 5.5 Arid and Semi-arid Geomorphology

SESSION: Arid and Semi-arid Geomorphology I

Monday, Sept. 4, 1989, 16.00 - 17.30 h, Room H 3

LAITY J. (USA): Paleowinds in North American Deserts, Determined from Ventifacts

PAULISSEN E. (Belgium): The Inundations of the Saharan Nile around 12,500 BP:
Unique Catastrophic Floods of an Exotic River

BALLAIS J.L. (Tunisia): Quaternary Wind Blown Sands Between the Cherb and Gafsa
Ranges (South Tunisia) (together with H.BEN QUEZDOU)

MOREL A. (France): Geomorphology and Prehistory; the Paleolithic Sites in the
Region of Taoudenni (Mali) Contribution to the Paleoclimatological
Study of the Sahara during the later Pleistocene (together with
T.TILLET)

SESSION: Arid and Semi-arid Geomorphology II

Tuesday, Sept. 5, 1989, 8.30 - 10.00 h, Room H 3

BAUMHAUER R. (FRG): Palaeolakes in South Central Sahara - Problems of
Palaeoclimatological Interpretation

GRUNERT J.W. (FRG): Soil and Relief Development in the Central Sahel (Rep. of
Niger)

TESCHNER R. (FRG): Examples of Lithostratigraphic Microanalysis of Prebasaltic
Levels and their Regional Comparability in the Southern Air (Rep. of
Niger)

BUSCHE D.M. (FRG): Geomorphic Effects of Subterranean Sandstone Karst in Arid
Eastern Niger

SESSION: Arid and Semi-arid Geomorphology III

Tuesday, Sept. 5, 1989, 14.00 - 15.30 h, Room H 3

JÄKEL D. (FRG): Gobi, an Edaphic Desert Area in Central Asia, Northwest China

BESLER H.E. (FRG): The Taklamakan Sand Sea: An Erg under Construction?

STENGEL I.U. (FRG): Mono- and Polygenetic Wind Ripple Types-Microforms
Indicating Morphodynamics of Desert Dunes

LITTMANN Th. (FRG): Recent Fallout of Saharan Dust in West Germany

SESSION: Arid and Semi-arid Geomorphology IV

Tuesday, Sept. 5, 1989, 16.00 - 17.30 h, Room H 3

ABRAHAMS A.D. (USA): Raindrop- and Flow-Detached Sediment in Overland Flow on
a Semiarid Hillslope, Southern Arizona (together with J.PARSONS &
SHUI-HUNG LUK)

RAPP A. (Sweden): Rainfall Fluctuations and Water Harvesting in African Drylands

BLÜMEL W.D. (FRG): Eolian Deposits and their Role in the Calcrete Development of
Namibia

VOGT Th. (France): Calcretes from Western Anti-Atlas (Morocco) and from Central
Patagonia (Argentina): the Origin of the Limestone

SUBSECTION 5.6 Tropical Geomorphology

SESSION: Tropical Geomorphology I

Thursday, Sept. 7, 1989, 14.00 - 15.30 h, Room H 3

DE DAPPER M. (Belgium): Tropical Geomorphology in Malaysia and Zaire

BRONGER A. (FRG): Tropical Weathering and Pediplanation - Examples from South
India (together with N.BRUHN)

VELDKAMP I.A. (Netherlands): Erosion Surface in the Chuka-South Area, Central
Kenya (together with P.W.VISSER)

JAIN V.K. (India): The Geomorphic Evolution of Central Aravalli Hills

SESSION: Tropical Geomorphology II

Thursday, Sept. 7, 1989, 16.00 - 17.30 h, Room H 3

NOSSIN J.J. (Netherlands): Morpho-Structural Relationships in the Lembang Fault Area, West Java, Indonesia (together with R.P.G.A.VOSKUL & M.DAMEN)

THORP M. (Ireland): Some Aspects of the Geomorphology of Late Pleistocene Alluvial Sediments in Western Kalimantan, Indonesia (together with M.THOMAS)

VERSTAPPEN H.Th. (Netherlands): Climatic and Tectonic Factors in the Geomorphology of Indonesia

VOGT J. (France): Conflicting Views on West African Geomorphology

SESSION: Tropical Geomorphology III

Friday, Sept. 8, 1989, 8.30 - 10.00 h, Room H 3

COLTRINARI L. (Brazil): Dambo-Like Landforms in Southeastern Brazil (together with F.NOUEIRA)

HERMELIN M. (Columbia): Stone Lines in Central Cordillera, Columbia

KLINGE H. (FRG): Amazonian Podzols and Related Soils in a Geomorphological Perspective

SECTION 6: FLUVIAL GEOMORPHOLOGY

Chairmen: J.HAGEDORN, Göttingen; I.DOUGLAS, Manchester

SUBSECTION 6.1 Fluvial Processes and Erosion Rates

SESSION: Fluvial Processes and Erosion Rates I

Monday, Sept. 4, 1989, 14.00 - 15.30 h, Room H 8

SPENCER T. (Great Britain): Vegetation and Fluvial Geomorphology in Southeast Asian Tropical Rainforests (together with I.DOUGLAS, A.GEER, W.SINUN)

BILLI P. (Italy): Steep Mountain Streams: Processes and Sediment

FARRENKOPF D. (FRG): Relief as a Control of Storm Runoff, a Contribution to Research on Fluvial Dynamics

POZDNYAKOV A.V. (USSR): Synergetics in the Processes of Geomorphodynamics

SESSION: Fluvial Processes and Erosion Rates II

Monday, Sept. 4, 1989, 16.00 - 17.30 h, Room H 8

LE ROUX J.S. (South Africa): The Rate of Fluvial Erosion over Southern Africa

KNOX J.C. (USA): Use of Lead and Zinc Trace Metals for Measurement of Erosion and Sedimentation in Upper Mississippi Valley Watersheds

GRAF W.L. (USA): Distribution of Radionuclides in Dryland Rivers

ICHIM I. (Rumania): Sediment Yield from Eastern Carpathians

PARSONS A.J. (Great Britain): Hydraulics of Overland Flow on a Semi-Arid Hillslope (together with A.D.ABRAHAMS & SHUI-HUNG LUK)

SUBSECTION 6.2 Fluvial Sediments and Sedimentation**SESSION: Fluvial Sediments and Sedimentation I**

Tuesday, Sept. 5, 1989, 8.30 - 10.00 h, Room H 8

LEWIN J. (Great Britain): Modelling the Downstream Reduction of Coarse Alluvial Sediments (together with P.A.BREWER)

KESEL R.H. (USA): Changes in the Suspended Sediment and Bedload Regimes of the Lower Mississippi River

ALVERA B. (Spain): Suspended and Dissolved Solids in the Runoff of a Small Pyrenean Watershed (together with J.C.DIEZ)

ISEYA F. (Japan): Buffer Effect by the Sediment Sorting to Form Stationary Gravel Bars in a Mixed-Bed Flume (together with H.IKEDA & T.E.LISLE)

SESSION: Fluvial Sediments and Sedimentation II

Friday, Sept. 8, 1989, 8.30 - 10.00 h, Room H 6

SORIANO M.A. (Spain): Characteristics and Datation of the Infilled Valleys of the Central Ebro Basin, Spain (together with J.A.CUCHI)

HEIKKINEN O.O. (Finland): Sedimentation in the Kutujoki Watercourse, Northern Finland (together with V.KNUUTINEN)

JEJE L. K. (Nigeria): Variation in Suspended Sediment Concentration During Storm Discharges in Three Small Streams in Upper Osun Basin, Central Western Nigeria

SUBSECTION 6.3 Channel Forms and Processes**SESSION: Channel Forms and Processes I**

Monday, Sept. 4, 1989, 16.00 - 17.30 h, Room H 6

PETIT F. (Belgium): Evaluation of Shear Stresses Required to Move Pebbles: Flume Experiments and Observations in Natural Streams

ERGENZINGER P. (FRG): River Bed Adjustment and Bed Load Transport in Gravel-Bed Rivers

PRESTEGAARD K. (USA): Spatial and Temporal Variations in Gravel Bedload Transport

JAMES A. (USA): Sustained Reworking of Hydraulic Mining Sediment in California: G.K. Gilbert's Sediment Wave Model Reconsidered

SESSION: Channel Forms and Processes II

Tuesday, Sept. 5, 1989, 14.00 - 15.30 h, Room H 8

KRHODA G.O. (Kenia): Bend Flow Structure and Lateral Erosion in Alluvial Channels

BRIZGA S.O. (Australia): Meander Cutoffs and Stream Power

JIN D. (China): A Preliminary Study on Hydraulic Geometric Relations in Modelling Channels

BHUIYA A.H. (Bangladesh): Recent Trend in Lateral Expansion of the Jamuna River (together with M.RAHMAN)

SESSION: Channel Forms and Processes III

Tuesday, Sept. 5, 1989, 16.00 - 17.30 h, Room H 8

ZWOLINSKI Z. (Poland): Hydraulic Geometry of the Parseta River Channel

SABOT V. (Greece): River Discharge and Stream Channel Changes Along a Torrent in Northern Peloponnesus, Greece (together with H.MAROUKIAN)

MARSTON R.A. (USA): Channel Maintenance Flows in Mountain Streams

MILLER T.K. (USA): An Assessment of the Rubey a Justment Hypothesis

SESSION: Channel Forms and Processes IV

Thursday, Sept. 7, 1989, 8.30 - 10.00 h, Room H 8

EBISEMIJU F.S. (Nigeria): Urbanization and Stream Channel Forms and Processes in the Humid Tropics

OLOLOBOU Y.P. (Nigeria): Historical Evidences of River Channel Instability in the Zaria Area, Nigeria

BRAVARD J.P. (France): Man-Induced Geomorphological Changes in the Floodplains of Braided Alpine Rivers in France, Since the 18th Century (together with J.L.PEIRY)

SESSION: Channel Forms and Processes V

Thursday, Sept. 7, 1989, 14.00 - 15.30 h, Room **H 8**

BEST J. (Great Britain): The Morphology of River Channel Confluences: Scales and Dynamics (together with A.G.ROY & C.S.BRISTOW)

ROY A.G. (Great Britain): Dynamics of a Small Sand Bed Confluence (together with B.DE SERRES)

BRIERLEY G.J. (Canada): Channel Planform Sedimentology: Derivation of a Geomorphic Scale of Analysis

OLOFIN E.A. (Nigeria): Savanna Channels and Hanging Tributary Channels

SUBSECTION 6.4 Floodplain Geomorphology

SESSION: Floodplain Geomorphology I

Thursday, Sept. 7, 1989, 16.00 - 17.30 h, Room **H 8**

BROWN A.G. (Great Britain): Holocene Floodplain Sediments in the East Midland, U.K.: Formation and Preservation (together with M.KEOUGH)

SALVADOR P.G. (France): Archaeological Evidence for Holocenic Floodplain Development in the Rhone Valley, France (together with J.P.BRAVARD, J.VITAL, J.L.VORUZ)

BERENDSEN H.J. (Netherlands): Holocene Fluvial Geomorphology of the Floodplain of the Rivers Rhine and Meuse in the Netherlands

PATTON P.C. (USA): Geomorphology and Late Quaternary Stratigraphy of the Floodout Plains of Central Australia (together with G.PICKUP & D.M.PRICE)

SESSION: Floodplain Geomorphology II

Friday, Sept. 8, 1989, 8.30 - 10.00 h, Room **H 8**

MERTES L.A. (USA): Measurements of Sedimentation on the Central Amazon Floodplain (together with T.DUNNE)

NANSON G.C. (Australia): Gradual, Episodic and Neocatastrophic Change in Fluvial Geomorphology (together with D.S.HEAN & D.ERSKINE)

KLIMEK K. (Poland): Floodplain Development in the Small Mountains Valleys, Bieszczady, Carpathians, Poland

HARASIMIUK M. (Poland): Sedimentation on the Floodplain of Wieprz River, Eastern Poland

SUBSECTION 6.5 Drainage Patterns

SUBSECTION 6.6 Fluvial Landform Evolution and Long Term Processes

SESSION: Fluvial Landforms Evolution and Long Term Processes I

Thursday, Sept. 7, 1989, 14.00 - 15.30 h, Room **H 6**

MACKLIN M.G. (Great Britain): Holocene River Alluviation in Britain (together with J.LEWIN)

AITKEN J.F. (Great Britain): Late Quaternary Palaeohydrology and Evolution of the Don Valley, Aberdeenshire, Scotland

SCHIRMER W. (FRG): Interaction of Man Nature in the Central European Valley Development ←

STARKEL L. (Poland): Models of late Quaternary Evolution of the Fluvial Systems in the Temperate Zone ←

SESSION: Fluvial Landforms Evolution and Long Term Processes II

Friday, Sept. 8, 1989, 14.00 - 15.30 h, Room **H 8**

Mc GREGOR D.F. (Great Britain): Pleistocene River Terraces in Southern Britain (together with C.P.GREEN)

MORETTI S. (Italy): Evolution of an Alluvial Plain in Central Italy-Sieve Basin Sample Area

COSTA F.E. (Portugal): Drainage Pattern and Evolution of the Alviela Valley, Pernes Region, Ribatejo, Portugal

KROONENBERG S.B. (Netherlands): Th-U Disequilibrium Dating of Travertine-Impregnated Pleistocene Alluvial Terraces in the Limagne Rift Valley, France (together with J.VAN DER PLICHT, B.VLAANDEREN, W.WASSINK)

SESSION: Fluvial Landforms Evolution and Long Term Processes III

Friday, Sept. 8, 1989, 16.00 - 17.30 h, Room **H 8**

MAIZELS J. (Great Britain): Longterm Paleochannel Evolution and Palaeohydrologic Change on an Exhumed Cenozoic Alluvial Plain in the Arid Tropics, Oman

RÖGNER K. (FRG): The Fine-grained Sediments of Wadi Firan, Sinai, Egypt (together with W.SMYKATZ-KLOSS)

NANSON G.C. (Australia): Alluvial Evidence of Quaternary Environmental Change from the Tropics of Northern Australia (together with R.W.YOUNG, D.M.PRICE & J.EAST)

BAKER V.R. (USA): Global Fluvial Paleohydrology

SECTION 7: COASTAL GEOMORPHOLOGY

Chairmen: D.KELLETAT, Essen; R.PASKOFF, Paris; E.BIRD, Melbourne; H.KLUG, Kiel

SESSION: Public Lecture

Monday, Sept. 4, 1989, 14.00 - 15.30 h, Room **H 10**

PASKOFF R. (France): Review of Coastal Problems - a Public Lecture (together with D.KELLETAT / FRG)

SESSION: Coastal Geomorphology

Monday, Sept. 4, 1989, 16.00 - 17.30 h, Room **H 10**

BRÜCKNER H. (FRG): The Geomorphogenesis of Selected Coastal Landforms in South and Southeast Asia

HARASIMIUK M. (Poland): Coast Types of South Bellsund in West-Spitsbergen and Tendency of their Evolution (together with W.JEZIERSKI)

DIONNE J-C. (Canada): Erosion of Rock Shore Platforms by Ice, Upper St. Lawrence Estuary, Quebec, Canada (together with D.BRODEUR)

SENN D.G. (Switzerland): On-reef Building Barnacles around Cocos-Island, Costa Rica (together with M.GLASSTETTER)

SUBSECTION 7.1 Tidal Flats, Estuaries, Deltas and Continental Shelves

SESSION: Tidal Flats and Coastal Dunes I

Thursday, Sept. 7, 1989, 8.30 - 10.00 h, Room **H 10**

WANG X. (China): Sediments of Tidal Flat in Jiangsu, China

ZHU D.K. (China): The Tidal Flat Coast of China

YU Z. (China): The Hydrodynamical Characteristics of Nearshore, Waters and the Discharging Process of Mud Flats (together with Y.ZHANG, D.CHENG & L.JIN)

MULRENNAN M. (Ireland): Beach Process Dynamics of a Ridge and Runnel System

SECTION 3: GEOMORPHOLOGICAL THEORY, CONCEPTS AND METHODS

Chairmen: F.AHNERT, Aachen; J.THORNES, Bristol

SUBSECTION 3.1 Theoretical Geomorphology and Concepts**SESSION: Geomorphological Systems and their Properties**

Tuesday, Sept. 5, 1989, 8.30 - 10.00 h, Room H 6

SLAYMAKER O. (Canada): Pluralism and Experimental Geomorphology

SCHEIDEGGER A.E. (Austria): Entropy of Landscapes (together with M.LECHTHALER-ZDENKOVIC)

AI N. (China): Entropy of a Drainage-System

SESSION: Simulation Models and Statistical Approaches

Tuesday, Sept. 5, 1989, 14.00 - 15.30 h, Room H 6

YONECHI F. (Japan): 'Smooth model' and 'Rough model' in Geomorphology

AHNERT F. (FRG): Relief Reduction and the Spatial Distribution of Denudation

FREDI P. (Italy): Relations between Morphometric Characteristics and Denudational Processes in some Drainage Basins of Italy (together with S.CICCACCI, L. D'ALESSANDRO & E.LUPIA PALMIERI)

SIEGBURG W. (FRG): A Statistical Approach to Relief Development and Morphogenetic Classification by Means of an Analysis of Residuals

SESSION: Geomorphological Concepts

Tuesday, Sept. 5, 1989, 16.00 - 17.30 h, Room H 6

KEMP A. U.K. Simulation of the Free Boundary Overfall in Relation to Gully Head Migration and some Practical Experiences (together with J.B. THORNES & J. EASTWOOD)

CINQUE A. (Italy): Marine Terraces on Tectonically Active Coasts: a Computer Simulation Model (together with A.CAMMISA)

TASHCHI S.M. (USSR): Modelling of Geomorphological Effect of Diapirism (together with V.V.ERMOSHIN)

SUBSECTION 3.2 Methods in Geomorphology (Dating, Experiments etc.)**SESSION: Geomorphological Experiments and Measurements**

Thursday, Sept. 7, 1989, 8.30 - 10.00 h, Room H 6

SHERMAN D.J. (USA): Measuring Aeolian Sediment Transport

ROBERTS M.C. (Canada): The Application of High Resolution, Seismic Reflection Profiling to Geomorphic Problems (together with H.JOL)

WINCHESTER V. (Great Britain): Lichenometry: its Use and Misuse; some Factors Affecting the Dating Range and the Shape of the Growth Curve

SESSION: Laboratory Dating Methods

Thursday, Sept. 7, 1989, 16.00 - 17.30 h, Room H 6

PRICE D.M. (Australia): Thermoluminescence Dating of Quaternary Sediments, the Thermoluminescence Technique (together with G.C.NANSON)

NANSON G.C. (Australia): Thermoluminescence Dating of Quaternary Alluvium, Recent Development (together with D.M.PRICE)

ROBERTS R.G. (Australia): Thermoluminescence Dating of Late Quaternary Deposits in Northern Australia (together with T.J.EAST)

LEES B. (Australia): Reconnaissance Thermoluminescence Dating of Northern Australian Coastal Dune Systems

ZOELLER L. (FRG): Thermoluminescence Dating of Sediments - Application and Use in Geomorphology and Quaternary Stratigraphy

SECTION 4: NEOTECTONICS AND STRUCTURAL GEOMORPHOLOGY

Chairmen: H.BREMER, Köln; N.MÖRNER, Stockholm; C.D.OLLIER, Armidale

SUBSECTION 4.1 Neotectonics and Landforms

SESSION: Neotectonics and Landforms I

Monday, Sept. 4, 1989, 14.00 - 15.30 h, Room H 7

VOGT H. (France): Morphotectonics of the SW-Border of the Rhinegraben

SZULC J. (Poland): Some Remarks on the Tectonics and Karst Properties of the Guilin Region, South China

L.BRANCACCIO L. (Italy): Geomorphology and Neotectonic Evolution of a Sector of the Tyrrhenian Flank of Southern Apennines, Region of Naples, Italy (together with A.CINQUE, C.ROSSKOPF, F.RUSSO & N.SANTANGELO)

RAFFY J. (France): Difficulties with Connecting Geomorphological Transects and Dating Shorelines in the Capo Vaticano Peninsula (South Italy) (together with B.DUMAS, P.GUEREMY, P.HEARTY & R.LHENAFF)

SESSION: Neotectonics and Landforms II

Monday, Sept. 4, 1989, 16.00 - 17.30 h, Room H 7

SCHROEDER B. (FRG): Landscape Development During the Neogene in Volcanic Areas of NE-Bavaria

DEFFONTAINES B. (France): Apports de 'Informatique a la Morpho-Neotectonique Application au Modele Numerique de Terrain (Strasbourg-France)

ZUCHIEWICZ W. (Poland): Morphotectonics of the Polish Flysch Carpathians: a Geomorphological Approach

KAIZUKA S. (Japan): Rates of Mountain Uplift Estimated from River and Valley Features in Central Japan

SESSION: Neotectonics and Landforms III

Tuesday, Sept. 5, 1989, 8.30 - 10.00 h, Room H 7

BRUM FERREIRA A.de (Portugal): Neotectonics in Northern Portugal: An Geomorphological Approach

GRACIA PRIETO J. (Spain): A Model of Genesis and Evolution of Erosion Surfaces in a Mediterranean Context, Examples from the Iberian Chain, Spain

MAGAGNOSC J.S. (France): Neotectonics of Western Dahra (Algeria)

UFIMTSEV G.F. (USSR): Neotectonic Orogenic Belts of Inner Asia

SESSION: Neotectonics and Landforms IV

Tuesday, Sept. 5, 1989, 14.00 - 15.30 h, Room H 7

BAKKER J.G. (Netherlands): Neotectonic Control on Sedimentology of Pleistocene Fluvial Deposits in the Intramontane Pitalito Basin, Columbia

EROL O. (Turkey): Geomorphology Evolution of the Taurus Mountains, Southern Anatolia, Turkey

DAVEAU S. (Portugal): Landforms Development in Portugese Central Ridge

YANG S. (China): The Basic Feature of the Landforms of Heilongjiang Province and its Forming Factors (together with GAO ZHENGCAO)

SESSION: Neotectonics and Landforms V

Tuesday, Sept. 5, 1989, 16.00 - 17.30 h, Room H 7

FARHOUDI G. (Iran): The Morphogenic Phase of the Alborz Mountain Ranges of Northern Iran

LERANOZ B. (Spain): Quaternary Deformations on Tertiary Gypsums and Marls in the Central Ebro Basin, Spain

XU M. (China): Preliminary Study of the Neotectonic Movement of the Nanyah Valley

KHUDYAKOV G.I. (USSR): Constructive and Destructive Tectogenesis and Relief Formation (together with R.I.NIKONOVA)

SUBSECTION 4.2 Macrorelief and Plate Tectonics

SESSION: Macrorelief and Plate Tectonics

Thursday, Sept. 7, 1989, 8.30 - 10.00 h, Room H 7

- LIDMAR- BERGSTRÖM K. (Sweden): Phanerozoic Tectonics in Southern Sweden
- PEULVAST J.P. (France): Structural Geomorphology and Morphotectonic Evolution in an Uplifted Rifted Margin: The Scoresby Sund Area, Greenland
- BIRKENHAUER J.A. (FRG): Plate Tectonics and Geomorphology, The Case of the Thalassoplains
- ZHANG D. (China): An Analysis of the Regionally Geomorphic System of the Xianshuihe Fault-Belt of Western Sichuan, China

SUBSECTION 4.3 Structural Geomorphology

SESSION: Structural Geomorphology I

Thursday, Sept. 7, 1989, 14.00 - 15.30 h, Room H 7

- EHLEN J. (USA): Significant Geomorphic and Petrographic Relations with Joint Spacing in the Dartmoor Grante, Southwest England
- REGNAULD H. (France): Plate Movements and Morphological Systems Example of the Portuguese Continental Slope
- DRAMIS F. (Italy): Deep-Seated Gravitational Slope Deformations and Neotectonics in Italy (together with G.M.SORRISO-VALVO)
- ZHANG H. (China): Application of the Tectonic Landform in the Study of Seismo-Geology in the Coastal Area of South China

SESSION: Structural Geomorphology II

Thursday, Sept. 7, 1989, 16.00 - 17.30 h, Room H 7

- BRONGULEYEV V.V. (USSR): Relationship of Different Scale Landforms with Deep-Seated Structures
- KULAKOV A.P. (USSR): Gigantic Morphostructures of Central Type - a New Object of Geomorphological Studies

LILIENBERG D.A. (USSR): Recent Endodynamics and Relief

SALLOUM G.M. (Egypt): Geomorphology and Structure of Cairo-Suez Area, Egypt

SESSION: Structural Geomorphology III

Friday, Sept. 8, 1989, 8.30 - 10.00 h, Room H 7

- LU YANCHOU (China): Study of Structural Geomorphology and Neotectonics in the Malingshan Hill Chain, Shandong Province, China
- AUGUSTIN C.H. (Brazil): Structural control on Slope Form and Evolution in the Serra do Espinhaco, Minas Gerais Brazil
- MILLS H.H. (USA): Caprocks and the Evolution of Strike-Ridge Mountains in the Valley and Ridge Province, Virginia USA
- SCHMIDT K.H. (FRG): Lithological Differentiation of Structural Landforms on the Colorado Plateau, USA

SUBSECTION 4.4 Volcanic Landforms

SESSION: Volcanic Landforms and Tectonics

Friday, Sept. 8, 1989, 14.00 - 15.30 h, Room H 7

- WANG Y. (China): The Volcanic Coast and Tectonic Activities of Northwestern Hainan Island, China (together with ZHOU, L.)
- REFFAY A.M. (France): Enclosed Hollows on Basalt Lava Flows
- LUPIA PALMIERI E. (Italy): Some Relations between Morphological Characteristics and Geological Structure in the Vulsini Volcanic Complex (Northern Lazio, Italy) (together with G.BUONASORTE, S.CICCACCI, D. DE RITE & P.FREDI)
- MOHAMMAD M.R. (Egypt): Minor Lineations and Fracturing: Field and Air Photographic Analysis in Southwestern Sinai, Red Sea Province

SECTION 5: CLIMATIC GEOMORPHOLOGY

Chairmen: H.HAGEDORN, Würzburg; A.RAPP, Lund

SUBSECTION 5.1 General Climatic Geomorphology**SESSION: General Climatic Geomorphology**

Monday, Sept. 4, 1989, 14.00 - 15.30 h, Room H 4

ABELE G. (FRG): The Interdependence of Elevation, Relief and Climate on the Western Slope of the Andes

YAMAMOTO A. (Japan): Periodicities of Grain Size Parameters Seen in the 1.400m Core Sediments from Lake Biwa (together with K.KASHIWAYA, K.FUKUYAMA & H.TAISHI)

SKRILNIK G.P. (USSR): Dynamic Aspects of Climatic Geomorphology

SADAH A. (Saudi-Arabia): The Mantle Characteristics of Some Granitic Pediments in the Al Baha Region, Western Saudi Arabia (together with P.VINCENT / Great Britain)

SUBSECTION 5.2 Glacial Geomorphology**SESSION: Glacial Geomorphology I**

Monday, Sept. 4, 1989, 16.00 - 17.30 h, Room H 4

X BÖSE M. (FRG): Glacial Morphology and Internal Structures of Landforms - Examples from an Area Reshaped During the Weichselian Glaciation

HART J. (Great Britain): The Geology and Dynamics of Ice Sheet Coalescence (together with R.C.A.HINDMARSH)

HASELTON G.M. (USA): Late Wisconsin Glacial Stratigraphy, Northern White Mountains, New Hampshire, USA

ROGERSON R.J. (Canada): Assessing the Late-Wisconsinan Ice Maximum in Northern Labrador, Canada

SESSION: Glacial Geomorphology II

Tuesday, Sept. 5, 1989, 8.30 - 10.00 h, Room H 4

EVANS I.S. (Great Britain): The Diverse Development of Glacial Cirques

GANGLOFF P. (Canada): Geomorphological Evidence of a Younger Dryas Event in Southern Quebec/Canada (together with B.HETU)

GARDNER J.S. (Canada): Temperature Conditions in Glacier Headwall Weathering Zones

ST.-ONGE D.A. (Canada): Geomorphology of Arctic Glacial Landforms and Buried Glacier Ice (together with J.Mc MARTIN)

SESSION: Glacial Geomorphology III

Tuesday, Sept. 5, 1989, 14.00 - 15.30 h, Room H 4

KAITANEN V.M. (Finland): Relationship between Ice-Sheet Dynamics and Bedrock Residuals on Dissected Plateau Areas in Finnish Lapland North of 69° Latitude

Grosswald M.G. (USSR): *Glacial Landforms and former Glaciation on the northeastern outskirts of Siberia*
LAWSON D.E. (USA): Subglacial Hydrology and Sedimentation, Matanuska Glacier, Alaska

MÄUSBACHER R. (FRG): Present-day Sediment Transport and Holocene Lacustrine Sequences, King George Island, Antarctica

SHI YAFENG (China): Last Glaciation and Maximum Glaciation on the Qinghai-Xizang Plateau.

SESSION: Glacial Geomorphology IV

Tuesday, Sept. 5, 1989, 16.00 - 17.30 h, Room H 4

DE GRAAFF L. (Netherlands): Pleistocene Deposits in Vorarlberg (Western Austria)

BURGA C.A. (Switzerland): The Southalpine Alps in the Late Würm-Glacial Period

EVANS D.J. (Canada): The Style and Chronology of High Latitude Glaciation, Northwest-Ellesmere Island, N.W.T., Canada

HARBOR J.M. (USA): Numerical Modelling of Glacial Valley Development - U-Shaped Cross-Sections and Stepped Long-Profiles (together with B.HALLET)

SESSION: Glacial Geomorphology V

Thursday, Sept. 7, 1989, 8.30 - 10.00 h, Room H 4

HOFMANN J. (FRG): Investigations on Present and Former Periglacial and Glacial Features in Central Helan Shan (Inner Mongolia/China)

DIXON J.C. (USA): A Model of the Geochemical System of the Alpine Geomorphic Process Suite

THOURET J.C. (France): Stratigraphy, Chronology and Paleoecology of the Last Glaciation, Central Cordillera, Colombia (together with T.VAN DER HAMMEN, B.SALOMONS & E.JUVIGNE)

ZHENG B. (China): Contention over the Existence of a Large Ice Sheet on the Qinghai-Xizang Plateau during Quaternary Time

SUBSECTION 5.3 Periglacial Geomorphology

SESSION: Periglacial Geomorphology I

Thursday, Sept. 7, 1989, 14.00 - 15.30 h, Room H 4

HARRY D.G. (Canada): Groundice and Permafrost Terrain Response to Environmental Change: Examples from Northern Canada

DIXON
~~JECKEL P.P.~~ (FRG): Permafrost and 'Diagnostic Landforms' in North Lapland

KING L. (FRG): Frost Weathering and Soil Temperatures in Discontinuous Permafrost Areas, Gornergrat Wallis, Swiss Alps

STÄBLEIN G. (FRG): Erosion under Cryogenic Conditions

SESSION: Periglacial Geomorphology II

Thursday, Sept. 7, 1989, 16.00 - 17.30 h, Room H 4

CRADDOCK R.A. (USA): The Frost Sorting Phenomenon: Frost Push Versus Frost Pull

scribbles
~~VAN VLIET-LANOE B.~~ (France): Differential Heaving, Loadcasting and Convection: Converging Mechanisms - The Origin of Cryoturbations

FRENCH H.M. (Canada): The Geomorphology of Unglaciated Periglacial Terrain: Barn Ranges, Northern Yukon, Canada (together with D.G.HARRY)

HALL K.J. (South Africa): Rock Weathering and Soil Formation in the Maritime Antarctic: An Integrated Study on Signy Island (together with D.W.H.WALTON)

SESSION: Periglacial Geomorphology III

Friday, Sept. 8, 1989, 8.30 - 10.00 h, Room H 4

ANDRE M.F. (France): Geomorphic Impact of Spring Avalanches in Northwest Spitsbergen (Kongsfjorden, 79 Grad N)

CHMAL H. (Poland): Solifluction Slopes and Rock Glaciers - the Mass Movement in the Hornsund Area, Spitsbergen

LUCKMAN B.H. (Canada): Debris Flow and Snow Avalanche Landforms in the Lairig Ghru, Scotland

RITTER J.B. (USA): Grezes Litees in the Valley and Ridge Province of Central Pennsylvania, USA: Regional Distribution, Morphology and Depositional Processes (together with T.W.GARDENER, J.C.BELL, K.F.CONNORS, N.M.PINTER & C.A.SHUMAN)

SESSION: Periglacial Geomorphology IV

Friday, Sept. 8, 1989, 14.00 - 15.30 h, Room H 4

DYKMANS J.W. (Netherlands): Eolian Deposits and Landforms in a Periglacial Environment, Sondre Stromfjord, West Greenland

SEPPÄLÄ M. (Finland): Deflation as a Geomorphic Agent in Arctic Environment

MIEHE G. (FRG): Gelideflation and Climatic Changes in Southern Tibet

HEYSE I. (Belgium): Aeolian Late Glacial Valleydamming in Northern Belgium

SUBSECTION 5.4 Mid-latitude Geomorphology

SESSION: Mid-latitude Geomorphology

Thursday, Sept. 7, 1989, 8.30 - 10.00 h, Room H 3

ETLICHER B. (France): Open Work Talus Slope Deposits in the French 'Massif Central'

HETU B. (Canada): Stratified Scree Slope Accumulation in a Forest Environment
(Gaspé Peninsula Quebec, Canada)

WENZENS G. (FRG): Influence of Tectonics and Climate on the Quaternary
Pediplanation in Southeastern Spain

NOMURA R. (Japan): A Study on the Mechanism and Chronology of the Debris
Slopes in Southwest Japan (together with TANAKA, S. & S.INQUE)

SUBSECTION 5.5 Arid and Semi-arid Geomorphology

SESSION: Arid and Semi-arid Geomorphology I

Monday, Sept. 4, 1989, 16.00 - 17.30 h, Room H 3

LAITY J. (USA): Paleowinds in North American Deserts, Determined from Ventifacts

PAULISSEN E. (Belgium): The Inundations of the Saharan Nile around 12,500 BP:
Unique Catastrophic Floods of an Exotic River

BALLAIS J.L. (Tunisia): Quaternary Wind Blown Sands Between the Cherb and Gafsa
Ranges (South Tunisia) (together with H.BEN OUEZDOU)

MOREL A. (France): Geomorphology and Prehistory; the Paleolithic Sites in the
Region of Taoudenni (Mali) Contribution to the Paleoclimatological
Study of the Sahara during the later Pleistocene (together with
T.TILLET)

SESSION: Arid and Semi-arid Geomorphology II

Tuesday, Sept. 5, 1989, 8.30 - 10.00 h, Room H 3

BAUMHAUER R. (FRG): Palaeolakes in South Central Sahara - Problems of
Palaeoclimatological Interpretation

GRUNERT J.W. (FRG): Soil and Relief Development in the Central Sahel (Rep. of
Niger)

TESCHNER R. (FRG): Examples of Lithostratigraphic Microanalysis of Prebasaltic
Levels and their Regional Comparability in the Southern Air (Rep. of
Niger)

BUSCHE D.M. (FRG): Geomorphic Effects of Subterranean Sandstone Karst in Arid
Eastern Niger

SESSION: Arid and Semi-arid Geomorphology III

Tuesday, Sept. 5, 1989, 14.00 - 15.30 h, Room H 3

JÄKEL D. (FRG): Gobi, an Edaphic Desert Area in Central Asia, Northwest China

BESLER H.E. (FRG): The Taklamakan Sand Sea: An Erg under Construction?

STENGEL I.U. (FRG): Mono- and Polygenetic Wind Ripple Types-Microforms
Indicating Morphodynamics of Desert Dunes

LITTMANN Th. (FRG): Recent Fallout of Saharan Dust in West Germany

SESSION: Arid and Semi-arid Geomorphology IV

Tuesday, Sept. 5, 1989, 16.00 - 17.30 h, Room H 3

ABRAHAMS A.D. (USA): Raindrop- and Flow-Detached Sediment in Overland Flow on
a Semiarid Hillslope, Southern Arizona (together with J.PARSONS &
SHUI-HUNG LUK)

RAPP A. (Sweden): Rainfall Fluctuations and Water Harvesting in African Drylands

BLÜMEL W.D. (FRG): Eolian Deposits and their Role in the Calcrete Development of
Namibia

VOGT Th. (France): Calcretes from Western Anti-Atlas (Morocco) and from Central
Patagonia (Argentina): the Origin of the Limestone

SUBSECTION 5.6 Tropical Geomorphology

SESSION: Tropical Geomorphology I

Thursday, Sept. 7, 1989, 14.00 - 15.30 h, Room H 3

DE DAPPER M. (Belgium): Tropical Geomorphology in Malaysia and Zaire

BRONGER A. (FRG): Tropical Weathering and Pediplanation - Examples from South
India (together with N.BRUHN)

VELDKAMP I.A. (Netherlands): Erosion Surface in the Chuka-South Area, Central
Kenya (together with P.W.VISSER)

JAIN V.K. (India): The Geomorphic Evolution of Central Aravalli Hills

SESSION: Tropical Geomorphology II

Thursday, Sept. 7, 1989, 16.00 - 17.30 h, Room **H 3**

NOSSIN J.J. (Netherlands): Morpho-Structural Relationships in the Lembang Fault Area, West Java, Indonesia (together with R.P.G.A.VOSKUL & M.DAMEN)

THORP M. (Ireland): Some Aspects of the Geomorphology of Late Pleistocene Alluvial Sediments in Western Kalimantan, Indonesia (together with M.THOMAS)

VERSTAPPEN H.Th. (Netherlands): Climatic and Tectonic Factors in the Geomorphology of Indonesia

VOGT J. (France): Conflicting Views on West African Geomorphology

SESSION: Tropical Geomorphology III

Friday, Sept. 8, 1989, 8.30 - 10.00 h, Room **H 3**

COLTRINARI L. (Brazil): Dambo-Like Landforms in Southeastern Brazil (together with F.NOUEIRA)

HERMELIN M. (Columbia): Stone Lines in Central Cordillera, Columbia

KLINGE H. (FRG): Amazonian Podzols and Related Soils in a Geomorphological Perspective

SECTION 6: FLUVIAL GEOMORPHOLOGY

Chairmen: J.HAGEDORN, Göttingen; I.DOUGLAS, Manchester

SUBSECTION 6.1 Fluvial Processes and Erosion Rates

SESSION: Fluvial Processes and Erosion Rates I

Monday, Sept. 4, 1989, 14.00 - 15.30 h, Room **H 8**

SPENCER T. (Great Britain): Vegetation and Fluvial Geomorphology in Southeast Asian Tropical Rainforests (together with I.DOUGLAS, A.GEER, W.SINUN)

BILLI P. (Italy): Steep Mountain Streams: Processes and Sediment

FARRENKOPF D. (FRG): Relief as a Control of Storm Runoff, a Contribution to Research on Fluvial Dynamics

POZDNYAKOV A.V. (USSR): Synergetics in the Processes of Geomorphodynamics

SESSION: Fluvial Processes and Erosion Rates II

Monday, Sept. 4, 1989, 16.00 - 17.30 h, Room **H 8**

LE ROUX J.S. (South Africa): The Rate of Fluvial Erosion over Southern Africa

KNOX J.C. (USA): Use of Lead and Zinc Trace Metals for Measurement of Erosion and Sedimentation in Upper Mississippi Valley Watersheds

GRAF W.L. (USA): Distribution of Radionuclides in Dryland Rivers

ICHIM I. (Rumania): Sediment Yield from Eastern Carpathians

PARSONS A.J. (Great Britain): Hydraulics of Overland Flow on a Semi-Arid Hillslope (together with A.D.ABRAHAMS & SHUI-HUNG LUK)

SUBSECTION 6.2 Fluvial Sediments and Sedimentation**SESSION: Fluvial Sediments and Sedimentation I**Tuesday, Sept. 5, 1989, 8.30 - 10.00 h, Room **H 8**

LEWIN J. (Great Britain): Modelling the Downstream Reduction of Coarse Alluvial Sediments (together with P.A.BREWER)

KESEL R.H. (USA): Changes in the Suspended Sediment and Bedload Regimes of the Lower Mississippi River

ALVERA B. (Spain): Suspended and Dissolved Solids in the Runoff of a Small Pyrenean Watershed (together with J.C.DIEZ)

ISEYA F. (Japan): Buffer Effect by the Sediment Sorting to Form Stationary Gravel Bars in a Mixed-Bed Flume (together with H.IKEDA & T.E.LISLE)

SESSION: Fluvial Sediments and Sedimentation IIFriday, Sept. 8, 1989, 8.30 - 10.00 h, Room **H 6**

SORIANO M.A. (Spain): Characteristics and Datation of the Infilled Valleys of the Central Ebro Basin, Spain (together with J.A.CUCHI)

HEIKKINEN O.O. (Finland): Sedimentation in the Kutujoki Watercourse, Northern Finland (together with V.KNUUTINEN)

JEJE L. K. (Nigeria): Variation in Suspended Sediment Concentration During Storm Discharges in Three Small Streams in Upper Osun Basin, Central Western Nigeria

SUBSECTION 6.3 Channel Forms and Processes**SESSION: Channel Forms and Processes I**Monday, Sept. 4, 1989, 16.00 - 17.30 h, Room **H 6**

PETIT F. (Belgium): Evaluation of Shear Stresses Required to Move Pebbles: Flume Experiments and Observations in Natural Streams

ERGENZINGER P. (FRG): River Bed Adjustment and Bed Load Transport in Gravel-Bed Rivers

PRESTEGAARD K. (USA): Spatial and Temporal Variations in Gravel Bedload Transport

JAMES A. (USA): Sustained Reworking of Hydraulic Mining Sediment in California: G.K. Gilbert's Sediment Wave Model Reconsidered

SESSION: Channel Forms and Processes IITuesday, Sept. 5, 1989, 14.00 - 15.30 h, Room **H 8**

KRHODA G.O. (Kenia): Bend Flow Structure and Lateral Erosion in Alluvial Channels

BRIZGA S.O. (Australia): Meander Cutoffs and Stream Power

JIN D. (China): A Preliminary Study on Hydraulic Geometric Relations in Modelling Channels

BHUIYA A.H. (Bangladesh): Recent Trend in Lateral Expansion of the Jamuna River (together with M.RAHMAN)

SESSION: Channel Forms and Processes IIITuesday, Sept. 5, 1989, 16.00 - 17.30 h, Room **H 8**

ZWOLINSKI Z. (Poland): Hydraulic Geometry of the Parseta River Channel

SABOT V. (Greece): River Discharge and Stream Channel Changes Along a Torrent in Northern Peloponnesus, Greece (together with H.MAROUKIAN)

MARSTON R.A. (USA): Channel Maintenance Flows in Mountain Streams

MILLER T.K. (USA): An Assessment of the Rubey a Justment Hypothesis

SESSION: Channel Forms and Processes IVThursday, Sept. 7, 1989, 8.30 - 10.00 h, Room **H 8**

EBISEMIJU F.S. (Nigeria): Urbanization and Stream Channel Forms and Processes in the Humid Tropics

OLOLOBOU Y.P. (Nigeria): Historical Evidences of River Channel Instability in the Zaria Area, Nigeria

BRAVARD J.P. (France): Man-Induced Geomorphological Changes in the Floodplains of Braided Alpine Rivers in France, Since the 18th Century (together with J.L.PEIRY)

SESSION: Fluvial Landforms Evolution and Long Term Processes III

Friday, Sept. 8, 1989, 16.00 - 17.30 h, Room **H 8**

MAIZELS J. (Great Britain): Longterm Paleochannel Evolution and Palaeohydrologic Change on an Exhumed Cenozoic Alluvial Plain in the Arid Tropics, Oman

RÖGNER K. (FRG): The Fine-grained Sediments of Wadi Firan, Sinai, Egypt (together with W.SMYKATZ-KLOSS)

NANSON G.C. (Australia): Alluvial Evidence of Quaternary Environmental Change from the Tropics of Northern Australia (together with R.W.YOUNG, D.M.PRICE & J.EAST)

BAKER V.R. (USA): Global Fluvial Paleohydrology

SECTION 7: COASTAL GEOMORPHOLOGY

Chairmen: D.KELLETAT, Essen; R.PASKOFF, Paris; E.BIRD, Melbourne; H.KLUG, Kiel

SESSION: Public Lecture

Monday, Sept. 4, 1989, 14.00 - 15.30 h, Room **H 10**

PASKOFF R. (France): Review of Coastal Problems - a Public Lecture (together with D.KELLETAT / FRG)

SESSION: Coastal Geomorphology

Monday, Sept. 4, 1989, 16.00 - 17.30 h, Room **H 10**

BRÜCKNER H. (FRG): The Geomorphogenesis of Selected Coastal Landforms in South and Southeast Asia

HARASIMIUK M. (Poland): Coast Types of South Bellsund in West-Spitsbergen and Tendency of their Evolution (together with W.JEZIERSKI)

DIONNE J-C. (Canada): Erosion of Rock Shore Platforms by Ice, Upper St. Lawrence Estuary, Quebec, Canada (together with D.BRODEUR)

SENN D.G. (Switzerland): On-reef Building Barnacles around Cocos-Island, Costa Rica (together with M.GLASSTETTER)

SUBSECTION 7.1 Tidal Flats, Estuaries, Deltas and Continental Shelves

SESSION: Tidal Flats and Coastal Dunes I

Thursday, Sept. 7, 1989, 8.30 - 10.00 h, Room **H 10**

WANG X. (China): Sediments of Tidal Flat in Jiangsu, China

ZHU D.K. (China): The Tidal Flat Coast of China

YU Z. (China): The Hydrodynamical Characteristics of Nearshore, Waters and the Discharging Process of Mud Flats (together with Y.ZHANG, D.CHENG & L.JIN)

MULRENNAN M. (Ireland): Beach Process Dynamics of a Ridge and Runnel System

SUBSECTION 7.3 Coastal Landform Evolution

SESSION: Holocene Coastal Evolution

Friday, Sept. 8, 1989, 8.30 - 10.00 h, Room H 10

ANTHONY E.J. (France): Holocene Beach-Ridge Progradation and its Implications for Present Beach Morphodynamics: Southern Sierra Leone, West Africa

SHAO X. (China): Holocene Transgression in Yangtse Delta, China (together with YAN QUINSHANG & XU SHIYUAN)

ZHANG R. (China): Influence of Shifting of Huanghe River Outlet on Development of Coast Zone in Jiangsu Province, China

BOURMAN R.P. (Australia): The Geomorphic Evolution of Sir Richard Peninsula and its Relevance for Management of the Murray Mouth, South Australia (together with C.V.MURRAY-WALLACE)

SESSION: Sea Level Changes and Coastal Terraces

Friday, Sept. 8, 1989, 14.00 - 15.30 h, Room H 10

HEALY T. (New Zealand): Coastal Erosion and Sea Level Rise

SCHLÜTER M. (FRG): Studies on Geomorphological Situation and Genesis of Coastal Area of Dar es Salaam/Tanzania

BRÜCKNER H. (FRG): Quaternary Marine Terraces in the Western Mediterranean Region - a Critical Review with Special Reference to Modern Concepts (together with U.RADTKE)

HORI N. (Japan): The Geomorphological Significance of the Newly Defined 'Daly Point' and 'Davis Point' on Coral Reef Formation and Distribution in the World

SESSION: Coastal Developments

Friday, Sept. 8, 1989, 16.00 - 17.30 h, Room H 10

BONVALLOT J. (French Polynesia): Contemporary Evolution of the Lagoon Coasts of the Society Islands (French Polynesia)

SELIVANOV A.O. (USSR): Marine Terraces and Regional Differences in Sea-Level Changes: Past, Present, Future

XU S. (China): Holocene Evolution of Sedimentary Environment in the Hangzhou Bay, China

WALKER H.J. (USA): Bluff erosion at barrow and wainwright, Arctic Alaska

SECTION 8: KARST GEOMORPHOLOGY

Chairmen: K.H.PFEFFER, Tübingen; J.NICOD, Aix en Provence;
M.SWEETING, Oxford

SUBSECTION 8.1 General and High Mountain Karst**SESSION: General and High Mountain Karst I**

Monday, Sept. 4, 1989, 14.00 - 15.30 h, Room H 11

SWEETING M.M. (Great Britain): Karst in Tibet Province of China

FORD D.C. (Canada): A Review of Dating Methods and Paleoenvironmental
Reconstruction Techniques Applied to Calcite Speleothems

SESSION: General and High Mountain Karst II

Monday, Sept. 4, 1989, 16.00 - 17.30 h, Room H 11

CHARDON M. (France): Some Data about Karstic Denudation and Tufaceous
Deposits in High Alpine Mountain (France)

ARAKAWA T. (Japan): Geographical Variation of Growthrate of Speleothem and its
Climatic Geomorphological Significance (together with N.HORI &
N.MIURA)

SMITH D.I. (Australia): Measurement of Limestone Erosion in Australia Using the
Micro-Erosion Meter (together with M.A.GREENAWAY & A.P.SPATE)

SESSION: General and Karst Soils

Thursday, Sept. 7, 1989, 16.00 - 17.30 h, Room H 11

SZULC J. (Poland): Fluvial Processes in Karstic and Nonkarstic Region - a
Comparative study

HORI N. (Japan): The Geomorphological Analysis on the Curved Axis of Speleothem:
For Example from Miyako-Jima Island, The Ryukyus, Japan (together
with T.ARAKAWA & H.MIURA)

BARANY-KEVEI I. (Hungary): Karst Soils as the Indicators of Karst Development

LIN JUNSHU (China): Preliminary Study on Soil Erosion of Karst Region in China

SUBSECTION 8.2 Tropical Karst**SUBSECTION 8.3 Mediterranean and Desert Karst****SESSION: Mediterranean and Desert Karst I**

Thursday, Sept. 7, 1989, 8.30 - 10.00 h, Room H 11

NICOD J. (France): Researches on the Evolution of the Montrieux Karst

AMBERT M. (France): Grands Causses Dolomitic Klufthkarren: Neogene
Morphogenesis and Quaternary Evolution (together with P.AMBERT)

HABIC P. (Yugoslavia): Pediments on Dinaric Karst

RODRIGUES M.L. (Portugal): Morphostructural Evolution of Minde and Alvados
Depressions (Macico, Calcario Estremenho, Portugal)

SESSION: Mediterranean and Desert Karst II

Thursday, Sept. 7, 1989, 14.00 - 15.30 h, Room H 11

GOUDIE A.S. (Great Britain): Tufas and Allied Chemical Sediments of the Napier
Range (NW Australia) (together with H.A.VILES)

SPONHOLZ B. (FRG): Micromorphological aspects of Karst Formation in Silicate
Rocks in the Southern Sahara/Niger

SUBSECTION 8.4 Water in Karst

SECTION 9: LAND EVALUATION, GEOMORPHOLOGICAL MAPPING AND REMOTE SENSING

Chairmen: H.LIEDTKE, Bochum; C.EMBLETON, London

SUBSECTION 9.1 Land Evaluation

SESSION: Land Evaluation I

Tuesday, Sept. 5, 1989, 8.30 - 10.00 h, Room H 11

RIEZEBOS H.Th. (Netherlands): Land Evaluation Studies and Geographical Information Systems (together with V. JETTEN / Netherlands)

DIKAU R. (FRG): Derivatives of Detailed Geomorphic Maps Using Computer Methods

GARDNER Th.W. (USA): Automated Characterization of Watershed Parameters from Digital Terrain Data sets (together with R.L.DAY & K.F.CONNORS)

SESSION: Land Evaluation II

Tuesday, Sept. 5, 1989, 14.00 - 15.30 h, Room H 11

HATANO S. (Japan): Toward Systematic Composition of Legend for Landform Classification Map and/or Geomorphological Map

VAN GHELUE P. (Belgium): Geomorphological Mapping as a Tool in the Delineation of Erosion Risk Zones in the Rio Guadalhorce Catchment (Spain) (together with M. VAN MOLLE / Belgium)

MENDIVELSO D. (Columbia): Geomorphology Applied to Natural Risks in Sumapaz Paramo, Columbia, Using Remote Sensing Datas (together with E.JORDAN / FRG)

SUBSECTION 9.2 Geomorphological Mapping

SESSION: Geomorphological Mapping

Tuesday, Sept. 5, 1989, 16.00 - 17.30 h, Room H 11

EMBLETON C. (Great Britain): The Geomorphological Map of Europe 1:2,5 Mio.

BURACZYNSKI J. (Poland): Geomorphological Map of Poland

MC GREGOR D.F. (Great Britain): Geomorphological Mapping and Remote Sensing at the Savanna/Rainforest Boundary, Roraima, Brazil and Guyana (together with D.THOMPSON & M.J.EDEN)

SUBSECTION 9.3 Remote Sensing

SESSION: Remote Sensing

Friday, Sept. 8, 1989, 14.00 - 15.30 h, Room H 11

BLAIR R. (USA): Recognizing Earth Surface Processes from Space

ROSENFELD Ch.L. (USA): The Earth Observing System (EOS): Monitoring Large Scale Geomorphic Change in the 1990s

PORTELA A.H. (Cuba): Experiences in the Use of Cosmics Images in Geomorphological Investigations under Different Geographical Conditions in Cuba (together with A. H. ASOYAN & D. A. LILIENBERG)

JACOBBERGER P.A. (USA): Mapping Abandoned Channels of the Niger River Using Filtered Remotely-Sensed Image Data

SECTION 1: GEOMORPHOLOGY AND GEOECOLOGY

Chairmen: H.LESER, Basel; J.de PLOEY, Leuven; G.HAASE, Leipzig

POSTER SESSION: Monday, Sept. 4, 1989, 12.00 - 13.00 h

POSTER SESSION: Monday, Sept. 4, 1989, 17.30 - 18.00 h

INTRODUCTION: Monday, Sept. 4, 1989, 12.00 h, Room H 8

SUBSECTION 1.1 Geomorphology and Ecological Structures

- (01) AHMADI H. (Iran): Relationship of Geomorphology, Pedology and Vegetal Cover in the Natural Resource's Plans
- (02) CHINEN T. (Japan): Post-Eruption Plant Recovery and Erosion in the Summit Atrio of Mt. Usu, Japan (together with A.RIVIERE)
- (03) EMMERICH K.H. (FRG): The Influence of Geomorphology and Soil Moisture Balance on te Forest- and Savanna Ecosystem Patterns in Brazil
- (04) THOMAS D.S. (Great Britain): The Nature and Geomorphological Role of Vegetation in the Dune Systems of Central Southern Africa

SUBSECTION 1.2 Geomorphology, Soils and Weathering

- (05) DE DAPPER M. (Belgium): Geomorphology for Soil Survey in the Lower Zaire Area (together with G.BAERT & J.EMBRECHTS)
- (06) GOSWAMI S.C. (India): High Spacing Phyllosilicates in some Soils Developed on Alluvium (together with B.S.KAPOOR)
- (07) JOLICOEUR S. (Canada): Petrology of Weathering on Crystalline Rocks in the Blue Ridge Mountains, Virginia, USA (together with P.ILDEFONSE, M.BOUCHARD & S.OCCHIETTI)
- (08) PELLERIN J. (France): Some Relationships between the Distribution of Genetic Sequences of Soils, Landscape Development and Geomorphological Evolution - a Three-Dimensional Study of a Drainage Basin (together with M.HELLUIN & P.CURMI)
- (13) PIERRE G. (France): Paleoclimatic Value of Weathered Granites Fossilized by Basaltic Lava Flows (Massiv Central Francais)
- (09) SUBRAMANYAN V. (India): Spheroidal Weathering of the Deccan Basalts in India

SUBSECTION 1.3 Soil Erosion

- (10) AUERSWALD K. (FRG): Comparing the Erosion Risk in the USA and in Bavaria Using Soil Inventory Data
- (11) AUGUSTIN C.H. (Brazil): 'Vocorocas' (Accelerated Erosion) - Mechanisms of their Evolution and their Role on Drainage Basin Dynamics: a Case Study in a Tropical Humid Area-MG / Brazil
- (12) BOROWKA R.K. (Poland): Late Glacial and Holocene Denudation within Kettle-holes Formed During the Last Glaciation
- (14) ENDLICHER W. (FRG): Geoecological Investigation on Landscape Degradation in Central Chile
- (16) KWABE S.A. (Nigeria): Rate of Soil Wash on Burned and Burned Sites in a Forest Reserve near Zaria, Northern Nigeria
- (17) MARKUSE G. (GDR): Sandy and Loamy Coverings by Subrecent Soil-erosion
- (18) MARTIN W. (FRG): Interaction of Climate and Soil Erodibility
- (19) MATHIER L. (Canada): Spatial and Temporal Variations in Runoff and Sediment Transport on Agricultural Fields (together with A.G.ROY)
- (20) MOLOPE M.B. (Botswana, RSA): Soil Erosion in Bophuthatswana, South Africa
- (21) SHAKESBY R.A. (Great Britain): The Impact of Forest Fire on Soil Erosion, Agueda Basin, Portugal (together with R.P.WALSH & C.A.COELHO)
- (22) WATTS G. (Great Britain): Soil Piping in Agricultural Terraces in Semi-arid South-east Spain
- (23) YERMOLAEV O.P. (USSR): Accelerated Soil Erosion in the Different Zones, Erosion of The Drainage Basin and Their Dynamics, East Russian Plain

SUBSECTION 1.4 Slopes and Slope Instabilities

- (25) COELHO NETTO A.L. (Brazil): Hillslope Evolution in a Humid Environment: SE Brazilian Plateau (together with J.R.S.DE MOURA)
- (26) GARZONIO C.A. (Italy): Deep Gravitational Phenomena and Ancient Landslides of Chiusi della Verna (Casentino, Tuscany) (together with P.CANUTI & P.VANNOCCI)
- (28) KOTARBA A. (Poland): On the Age and Magnitude of Debris Flows in the Polish Tatra Mountains

- (29) MOON B.P. (South Africa): The Development and Significance of Rectilinear Bedrock Slopes: Examples from Southern Africa
- (30) OKUSA S. (Japan): Assessment of Large-scale Landslides by Earthquakes (together with S.ANMA)
- (31) PELLERIN J. (France): A Contribution to an Understanding of Landscape Development through Three-dimensional Morphological Analysis of Pedological Cover (Paulinia, State of Sao Paulo; Brasilia) (together with R.BOULET, P.CURMI, M.A.FAGNANI & J.P.QUEIROZ-NETO)
- (32) PINCZES Z. (Hungary): Relationship between the Geomorphological Conditions Slope Sediments and the Geoecological Units
- (33) QIU S.J. (China): Rill Erosion in Weathering Mantle of Granite Hillslope
- (34) RAI R.K. (India): Analysis of Slope Characteristics in the Gunti Basin, Tripura, India
- (35) SHIMIZU F. (Japan): Origin of Ridge-top Trenches and Uphill-facing Scarps of Mountain Slopes in Japan
- (36) SUZUKI T. (Japan): Practical Formulation of the Slope Decline of Terrace Scarps in the Chichibu Basin, Japan (together with A.NAKANISHI)
- (37) VALPREDA E. (Italy): Landslide-Dams in the Italian Western Alps (together with M.GOV)
- (38) VAN STEIJN H. (Netherlands): Temporal and Spatial Variability of Debris-Flow Activity near the Col de la Cayolle (French Alps) (together with E.E.J.WEISS)

SUBSECTION 1.5 Geomorphology, Ecology and Man

- (39) BALLAIS J.L. (Tunisia): Tunisian Historic Terraces
- (43) DUFAURE J.J. (France): Geomorphological Evolution in Historical Times along the Valley of Ilia (Western Peloponnese, Greece) (together with E.FOUACHE)
- (40) MILANOV R. (Bulgaria): Change of Certain Micro-biological Properties of Technogenic Landscapes after Biological Recultivation
- (41) SUKUMAR B. (India): Geomorphic Processes and their Impact on the Land Use Pattern in Kerala, India

SUBSECTION 1.6 Water in Geoeosystems

- (42) MATSUKURA Y. (Japan): Notch Formation Processes Due to Weathering in the Valley Cliffs with Different Aspects
- (44) BOUCHARD M. (Canada): Physico-chemical Characteristics of Waters of the l'Assomption River (Quebec, Canada) and its Principal Tributaries: environmental influences (together with C.PRONOVOST & M.BERRAJA)

SUBSECTION 1.7 Geomorphic Hazards

- (45) CAVALLIN A. (Italy): Landslides and Debris Flows Triggered by the 1987 Earthquake in the Reventador Area (Ecuador) (together with L.FERRARI & G.PASQUARE, D.SLEJKO & A.TIBALDI)
- (46) DERBYSHIRE E. (Great Britain): A Geomorphological Hazard Inventory of the Karakorum Highway Hunza River Valley, Northern Pakistan (together with M.FORT & L.A.OWEN)
- (47) SLAYMAKER O. (Canada): Developments in Understanding of Debris Torrents

SUBSECTION 1.8 Paleohydrological Systems

- (48) BROOK G.A. (USA): Paleoenvironmental Data for Ituri, Zaire, from Sediments in Matupi Cave, Mt. Hoyo
- (49) CHEN Z. (China): Comparativ Study of Some Eurasian Loess
- (50) KOUTANIEMI L. (Finland): Publication in Palaeohydrology
- (51) LICHT E. M. (FRG): Arid Processes in the SE-Brazilian Relief-Evolution during the Last Ice-Age
- (52) LIU S. (China): Geomorphological Environmental Characteristics on the Inhabitable Region of the Surviving Giant Pandas
- (53) SCHUBERT C. (Venezuela): Palaeoenvironmental Aspects of the Gran Sabana, Guayana Shield (Venezuela) (together with V.RULL & M.RINALDI)
- (54) SIMON-COINCON R. (France): Reconstitution of Palaeopiedmonts and Associated Weatherings on the Edge of a Crystalline Old Block
- (55) TORCAL L. (Spain): The Pliocene Pleistocene Transition in the Province of Huelva (Spain)
- (56) XU M. (China): The Outline of the Quaternary Environmental Evolution of the Roer-Gai Plateau in Northwestern Sichuan

SUBSECTION 1.9 High Mountain Geomorphology

- (57) PAL S.K. (India): On the Geomorphology of Great Suture Zone of western Ladakh, Kargil to Leh

SECTION 2: APPLIED GEOMORPHOLOGY

Chairmen: G. RICHTER, Trier; M. PECSI, Budapest

POSTER SESSION: Tuesday, Sept. 5, 1989, 12.00 - 13.00 h

POSTER SESSION: Tuesday, Sept. 5, 1989, 17.30 - 18.00 h

INTRODUCTION: Tuesday, Sept. 5, 1989, 12.00 h, Room H 7

SUBSECTION 2.1 Geomorphology and Land Use Planing

- (01) ABEGUNDE A. (Nigeria): Conflict between Geomorphology and Landuse Management on the Coastal Plains around Lagos, Nigeria
- (02) GENTCHEVA-KOSTADINOVA S. (Bulgaria): Forest-Biological Reclamation of Technogenic Landscapes in Bulgaria
- (03) SUN G. (China): A Study on the Structure and Formation of the Landform and Reasonable Reclamation in Sangjiang Plain
- (04) MEZŐSI G. (Hungary): The Assessment of Landscape-Potentials and Applications in Hungary
- (05) RODOLFI G. (Italy): Large Scale Holistic Survey and Mapping for Landuse Planning: A Case-Study in Northern Tuscany (Italy) (together with G.SAULLE)
- (06) SHARMA H.S. (India): Geomorphological Aspect of the Processes of Desertification in North Eastern Rajasthan, India
- (07) SINGH R.B. (India): UNEP/UNITAR/EPFL GIS Research Proposal - Geographical Monitoring of Natural Resources for Forecasting Soil Erosion Hazards and land Capability Classification in Himachal Himalaya: a Study of Mandi and Simla District
- (08) ZHAO L. (China): The Geomorphology and Land Utilization in Sanjiang Plain Area

SUBSECTION 2.2 Geomorphology in Engineering and Mining

- (09) GENTCHEVA- KOSTADINOVA S. (Bulgarien): Soil Formation Process on Substrata Formed by Coal Mining in the Pernik Basin
- (10) TEEUW R.M. (Greatbritain): Micromorphology & Stratigraphy of some West African Soils

SUBSECTION 2.3 Man-made Landforms

- (11) DIAO C. (China): A Preliminary Study on the Urban Geomorphology in Sichuan Province

SUBSECTION 2.4 Slope Management, Slope Stabilization and Soil Conservation

SUBSECTION 2.5 Methods used in Applied Geomorphology

SUBSECTION 2.6 Geomorphological Information Systems

- (12) VAN WESTEN C.J. (Netherlands): Geographical Information System 'ILWIS' Used in Applied Geomorphological Mapping

SECTION 3: GEOMORPHOLOGICAL THEORY, CONCEPTS AND METHODS

Chairmen: F.AHNERT, Aachen; J.THORNES, Bristol

POSTER SESSION: Thursday, Sept. 7, 1989, 12.00 - 13.00 h

POSTER SESSION: Thursday, Sept. 7, 1989, 17.30 - 18.00 h

INTRODUCTION: Thursday, Sept. 7, 1989, 12.00 h, Room H 7

SUBSECTION 3.1 Theoretical Geomorphology and Concepts

(04) YOXALL W.H. (Great Britain): A National Educational Earth Science Facility

SUBSECTION 3.2 Methods in Geomorphology (Dating, Experiments a.o.)

(05) CALLES B. (Sweden): Temperature Corection of Specific Conductance Values (together with U.M.CALLES)

(06) FORD D.C. (Canada): U-Series Dating of the Draining of an Aquifer

(07) GOOSSENS D. (Belgium): The Effect of Topography on Aeolian Dust Deposition: Laboratory Experiments and Field Verifications

(08) KULANDER L. (Sweden): Using CS-137 to Identify Sediment Sources and Magasines in Sediment Routing and Sediment Budget Studies in Lesotho

(09) ZHANG D. (China): On the Significance and Trends of Negative Landform Study

SECTION 4: NEOTECTONICS AND STRUCTURAL GEOMORPHOLOGY

Chairmen: H.BREMER, Köln; N.MÖRNER, Stockholm;
C.D.OLLIER, Armidale

POSTER SESSION: Friday, Sept. 8, 1989, 12.00 - 13.00 h

POSTER SESSION: Friday, Sept. 8, 1989, 17.30 - 18.00 h

INTRODUCTION: Friday, Sept. 8, 1989, 12.00 h, Room H 7

SUBSECTION 4.1 Neotectonics and Landforms

(01) BAUMGART-KOTARBA M. (Poland): Formation of the Alluvial/Fluvioglacial Fan Affected by Neotectonic Movements - Foreland of the Tatra Mts.

(02) CERVANTES- BORJA J.F. (Mexico): Seismic Microzonification of the metropolitan Area of Great City of Mexico (together with R.LOPEZ-REZENDEZ)

(03) DIAO C. (China): Landforms in Panzhihua-Xichang District Sichuan Province, China

(04) DRAMIS F. (Italy): Summit Palaeosurfaces and Neotectonic Evolution of the Marche Region (Italy) (together with O.NESCI, G.PAMBIANCHI, M.CONSOLO)

(05) FAUGERES L. (France): Morphotectonic Hazards and Industrial Development

(06) GRELOU-ORSINI C. (France): Salient Features of the Evolution of the Eastern Plain of Corsica

(07) HARVEY A.M. (Great Britain): Halokinetic Deformation of Quaternary River Terraces in Sorbas Basin, Southeast Spain (together with A.E.MATHER & P.J.BRENCHLEY)

(08) KARABIYIKOGLU M. (Turkey): Tectonic Geomorphology and Basin Fill Deposits of Malatya Basin, Eastern Anatolia: A Case Study of Strike-Slip Related Late Cenozoic Basin Evolution

(09) LE COEUR C. (France): A Neotectonic Ridge or a Protalus Rempart in Raasay (Inner Hebrides, Scotland)

(10) LILIENBERG D.A. (USSR): Structural Geomorphology and Neotectonics of the Mountains Systems of Oriente, Cuba (together with J.R.HERNANDEZ)

SUBSECTION 4.2 Macrorelief and Plate Tectonics

- (12) CHEN Z.M. (China): Macrorelief and Plate Tectonics at China and its Neighbouring Area
- (13) EZHOV B.V. (USSR): On Relation of Relief with Stratiform Mantle
- (14) FORT M.B. (France): The Himalaya: a Geomorphological Model for an Intracontinental Collisional Range
- (15) KROONENBERG S.B. (Netherlands): Uplift History of the Northern Colombian Andes: a Review
- (16) RADTKE U. (FRG): Marine Terraces as Indicators of Neotectonic Movement: A Comparison of the Active Continental Margin of Chile and the Passive Continental Margin of Argentina
- (17) THORP M. (Ireland): Stability and Instability on Tropical Cratons (together with M.THOMAS)
- (18) ZHANG H. (China): The Fault Delta

SUBSECTION 4.3 Structural Geomorphology

- (19) ERKAL T. (Turkey): Fault Controlled Landforms: Case Studies from Turkey
- (21) HARASIMIUK M. (Poland): Structural Control of Drainage System on the Lublin Upland
- (22) KHUDYAKOV G.I. (USSR): Conception of Geological-Geomorphological Conformity and Geomorphological Paragenesis
- (23) KULAKOV A.P. (USSR): Large Relief Reformations of Continental Margins of the World

SUBSECTION 4.4 Volcanic Landforms

- (25) ÖZGÜR R. (Turkey): The Evolution of Meydan and Zilan Calderas (E. Turkey) and their Importance in View of Geothermal Energy
- (26) SCHREIBER W.E. (Rumania): Volcanic Relief in the Eastern Carpathians
- (27) THOURET J.C. (France): Geomorphology, Stratigraphy and Hazard Mapping at Necado del Tolima, Central Cordillera, Columbia (together with J.M.CANTAGRAL, H.CEPEDA & A.MURCIA)

- (28) YANG Y. (China): A Study on Development and Characteristics of volcanic Geomorphology at Changbai Mountain in China
- (29) YILDIRIM T. (Turkey): Volcansim between Acigöl (Nevsehir) and Göllüdag (Nigde), Central Turkey
- (30) YOKOYAMA S. (Japan): Dissection of Initial Landform Produced by Large Pyroclastic Flows
- (31) ZHANG D. (China): The Quaternary Volcanoes in China

SECTION 5: CLIMATIC GEOMORPHOLOGY

Chairmen: H.HAGEDORN, Würzburg; A.RAPP, Lund

POSTER SESSION: Thursday, Sept. 7, 1989, 12.00 - 13.00 h

POSTER SESSION: Thursday, Sept. 7, 1989, 17.30 - 18.00 h

INTRODUCTION: Thursday, Sept. 7, 1989, 12.00 h, Room H 8

SUBSECTION 5.1 General Climatic Geomorphology

(11) REYNHARDT J.H. (South Africa): Quaternary Deposits against the Magaliesberg Hillslope in the Bankeveld Area on the Highveld of South Africa

(12) VAN RHEEDE VAN OUDTSHOORN P.W. (South Africa): Quaternary Climatic Fluctuations as Reflected in the Colluvial Deposits in the Aliwal-North Vicinity

SUBSECTION 5.2 Glacial Geomorphology

(13) BOUCHARD M. (Canada): Characteristics and Evolution of Saprolites in Quebec, Canada and New England, USA: A Contribution to Glacial Geomorphology

(14) CHMAL H. (Poland): Glacial History of the Karkonosze Mts. (together with J.CZERWINSKI & A.TRACZYK)

(15) FLOREZ A. (Columbia): Cataclasis by Glacier Pressure and Flaking Process in Periglacial Environment (together with G.RODRIGUEZ)

(16) HANVEY P. (South Africa): Form and Origin of Arcuate Drumlins in Clew Bay/Western Ireland

(17) JING C. (China): The Feature of Landform and Quaternary Glacial in Yulang Mountains (together with Q.MING)

(18) JOHNSON P.G. (Canada): The Continuum between Moraines and Rock Glaciers in the Glacier Ice-Cored Proglacial Environment

(19) JOLICOEUR S. (Canada): Landscape Differentiation from Glacial System in the Adirondacks, New York, USA (together with M.BOUCHARD & S.OCCHIETTI)

(20) KAISER K.F. (Switzerland): Calibration of Growth Disturbances in Fossil Tree Ring Chronologies Caused by Geomorphic Processes

(21) MAIZELS J. (Great Britain): Glaciofluvial Sedimentology of Jokulhlaup Sandur Deposits Iceland: The Basis for a New Model of Sandur Development

(23) PIOTROWSKI J. (FRG): A Melt-Out Sequence from Dänischer Wohld, Schleswig-Holstein, as an Paleogeomorphological Indicator

(25) QIU SHANWEN (China): A Study on the Early Quarternary Stratigraphical Period and their Depositional Environment on Northeast of China (together with XIA YUMEI & WANG PEIFANG)

SUBSECTION 5.3 Periglacial Geomorphology

(26) AMBERT P. (France): Eolian Periglacial Enclosed Depressions in Alluvial Plains of South of France (together with CLAUZON)

(27) BERGQVIST E. (Sweden): National Surveys of River Terrace Features in Sweden

(29) EVIN M. (France): The Marinet Rock Glaciers, Southwestern Alps

(30) GERRARD J. (Great Britain): Geomorphological Relationships of Earth Hummocks in Iceland

(31) HABBE K.A. (FRG): Aeolian and Ablual Sand Transport Under Periglacial Conditions During the Maximum Stage of the Last Glaciation - Demonstrated by the Sand Accumulations in Front of the Malm Cuesta of the Fränkische Alb (Northern Bavaria, FRG)

(32) JING C. (China): On Hillslope Development in East Middle Tai-hang Mountain (together with L.LI)

(34) KOSTER E.A. (Netherlands): Climate Variability and Geomorphological Processes in the Periglacial Domains

(35) NITZ B. (GDR): Periglacial Development of Relief and Calcareous Sediments in Basins of the Younger Drift Area in Northern Middle Europe (together with S.M.CHROBOK)

(36) NYBERG R. (Sweden): Freeze-Thaw Activity at Snowpatch Sites in Sweden

(37) PECH P. (France): Cryogenic Soils in Ossola (Italian Alps)

(38) SCHLYTER P. (Sweden): Periglacial Wind Action in Scania, S. Sweden

(39) SOLLID J.L. (Norway): Periglacial Geomorphology of Kvadehuksletta, Svalbard (together with L.SØRBEZ & J.TOLGENSBÄKK)

(40) SOLLID J.L. (Norway): Rock Glaciers in Norway, Svalbard Included (together with B.ETZELMÜLLER, L.SØRBEZ & J.TOLGENSBÄKK)

SUBSECTION 5.4 Mid-latitude Geomorphology

- (41) PECSI M. (Hungary): Geomorphological Surfaces in the Hungarian Mountains
- (42) SCHWARZ T. (FRG): Lateritic Bauxite in the Vogelsberg Area (W-Germany)
- (43) SUN JIANZHONG (China): Preliminary Studies of Holocene Environment of Loess Plateau of China (together with M.KE, J.ZHAO, X.SUN & M.WEI)
- (45) TIKKANEN M. (Finland): Geomorphology of the Vantaanjoki Drainage Basin, Southern Finland

SUBSECTION 5.5 Arid and Semi-arid Geomorphology

- (47) GAVRILOVIC D. (Yugoslavia): Evolution of the Valley System of Modrage (Tibesti, Chad)
- (48) HARMSE J.T. (South Africa): Delimiting the Mobility of Aeolian Deposits on the South African West Coast
- (49) LAOUINA A. (Marocco): Evolution des Versants a Encrouement Calcaire en Region Semi-arid
- (50) LEFEVRE D. (France): Quaternary Glacis and Terraces in Oriental Marocco
- (51) RÖGNER K. (FRG): The Interrelation of Geomorphology and Evaporite Formation in the Wadi El-Natron, Egypt (together with W.SMYKATZ-KLOSS & S.WENIGWIESER)
- (52) SADEK A. (Egypt): Geomorphology of Gebel Hit Area, Southeast Riyadh, Saudi Arabia
- (53) SARVATI M.R. (Iran): Study of the Geomorphologic situation and Erosion on the Basin Slope of Taleghan (Sefid-Rud) (together with H.AHMADI)
- (55) VÖLKEL J. (FRG): Formation of Dunes and Pedogenesis as Palaeoclimatic Indicators in Sahara and Sahel of the Republic of Niger

SUBSECTION 5.6 Tropical Geomorphology

- (56) BRÜCKNER H. (FRG): The Geomorphological Evolution of Southern India - a Case Study for Climatic Morphodynamics
- (57) JORDAN E. (FRG): Geomorphology of the Santo Domingo Region/Ecuador (together with A.ZUNIGA)

- (58) PANDEY R.S. (India): Morphogenesis of sandstone anvils - a fluvial micro-land form of subhumid tropical environment of Rewa-Bhander Plateau, M.P. India
- (59) PANDEY R.S. (India): Slope Dynamics in Subtropical Fluvial Environment over Northern Foreland of Peninsula India: a Case Study of Bhander Plateau Region
- (60) THORP M. (Ireland): New Perspectives on the Geomorphology of Western Kalimantan, Indonesia (together with M.THOMAS)
- (61) THORP M. (Ireland): Stonelines and Planation in the Humid Tropics (together with M.THOMAS)

SECTION 6: FLUVIAL GEOMORPHOLOGY

Chairmen: J.HAGEDORN, Göttingen; I.DOUGLAS, Manchester

POSTER SESSION: Friday, Sept. 8, 1989, 12.00 - 13.00 h

POSTER SESSION: Friday, Sept. 8, 1989, 17.30 - 18.00 h

INTRODUCTION: Friday, Sept. 8, 1989, 12.00 h, Room H 8

SUBSECTION 6.1 Fluvial Processes and Erosion Rates

- (32) CLAUZON G. (France): Response from a Great River to Exceptional Variations of its Base-level: The Rhone Example before, during and after the Messinian Salinity Crisis
- (33) DE OLIVEIRA M. (France): Hillslope Morphology Controlling Gully Extension: Bananal, Sao Paulo (together with A.L.COELHO NETTO)
- (34) JOHANSSON P.W. (Finland): The Classification of Glaciofluvial Deposits in the Lutto River Basins, Finnish Lapland
- (35) KOSTRZEWSKI A. (Poland): Bank erosion on the Parseta River, NW-Poland (together with Z.ZWOLINSKI)
- (36) MAROULIS J.C. (Australia): Mud Transported as Bedload, Cooper Creek, Central Australia
- (37) STARKEL L. (Poland): Thresholds in the Transformation of Slopes and River Channels in the Darjeeling Himalaya (together with W.FROEHLICH & E.GIL)
- (38) VANDENBERGHE J. (Netherlands): Changing Fluvial Processes under Changing Periglacial Conditions

SUBSECTION 6.2 Fluvial Sediments and Sedimentation

- (39) BECHT M. (FRG): Qualitative and Quantitative Differentiation of the Sediment Balance of Torrents in the Northern Border Alps (Lainbach near Benediktbeuern/Upper Bavaria) (together with K.F. WETZEL)
- (40) BERGERON N. (USA): Flow and Particle Paths at a Natural River Confluence with Coarse Bed Material (together with A.G.ROY)
- (41) GOSWAMI D.C. (India): Pattern of Sediment Transport in the Brahmaputra River, Assam/India

- (42) GUPTA A. (Singapore): Sediment Sources and Measures from Tropical Urban Environment of Southeast Asia
- (43) KING L. (FRG): Studies on the Late Pleistocene and Holocene Development on the Lahn Valley in the Giessen Area (together with E.GORTNER, L.KING, B.BECKER & K.RÖTTGER)
- (44) KLIMEK K. (Poland): Early Anthropogenic Alluviation in the Subcarpathian Mountains, Oswiecim Basin, Poland
- (45) KROONENBERG S.B. (Netherlands): A Comparison of Sand Geochemistry with Gravel Lithology of a Weichselian Terrace of the Allier River, Limagne Rift Valley, France (together with H.Z.GOSLINGS-NIEUWBEERTA)
- (46) LIU Z. (China): Sedimentation and Geomorphic Age of Yuanmo Basin on Yunnan Plateau of Southwest-Eastern China (together with LI QUING-CHEN)
- (47) SCHULTE A. (FRG): Present-day Transport and Deposition of Fluvial Sediments in the Elsenz-Area
- (48) VELDKAMP I.A. (Netherlands): A Comparison of the Sand Geochemistry of the Allier and Dore Terraces, Limagne Rift Valley, France (together with S.B.KROONENBERG)

SUBSECTION 6.3 Channel Forms and Processes

- (49) BHUIYA A.H. (Bangladesh): Channel Migrates on the Jamuna River: 1830-1985 (together with S.ALAM & E.A.SIDDIQUEY)
- (50) DIETRICH W.E. (USA): An Aspect of Geometric Similarity Between Channel Head Source Areas (together with D.R.MONTGOMERY)
- (71) KIM J.W. (S.-Korea): The Functional Fluvialmorphology of the River Kall in the Northern Eifel, FRG
- (51) LOPEZ-BERMEDEZ F. (Spain): Hydric Erosion and Fluvial Sedimentation in the River Segura Basin, Spain (together with M.A.ROMERO-DIAZ & F.CABEZAS)
- (52) RUSSELL A. (Great Britain): Geomorphological effects of a Sökulhlaup upon a Proglacial River Channel in West Greenland
- (53) SCHMIDT K.H. (FRG): Bed Load Transport, Bed Form and Roughness Variation in an Alpine River, Lainbach, Bavaria
- (54) SHAKIR A.M. (Iraq): Hydraulic Geometry Parameters Variation at Selected Stations within Tigris River in Iraq (together with H.ISMAEL)

- (55) WARNER R.F. (Australia): Downstream Changes in Channel Morphology and Capacity in the Bellinger Valleys, NSW, Australia

SUBSECTION 6.4 Floodplain Geomorphology

- (56) ANDREN H. (Finland): Advance and Morphological Development of the Laitaure Delta
- (57) BAUMGART- KOTARBA M. (Poland): Mechanism of Braided Alluvial Plain Formation, by Taking as Example the Coarse Gravel Sedimentary Environment
- (58) CROKE J. (Ireland): Floodplain Variability within some Glaciated Valleys in Wicklow, Ireland
- (59) SHAO S. (China): Fluvial Geomorphological Pattern of Huang-Huai-Hai Plain in China (together with GUO SHENGQIAO)

SUBSECTION 6.5 Drainage Patterns

- (60) DE VILLIERS A.B. (South Africa): Lineament Control of the Drainage Pattern in the Vredefort Dome
- (61) SUBRAMANYAN V. (India): Structural Significance of the Channel and Drainage Patterns in the Lower Indravati Valley, Southeastern Maharashtra, India
- (62) WALSH R.P. (Great Britain): Drainage Density and Network Evolution in the Tropics
- (63) ZAKARIA A.S. (Malaysia): The Distribution Pattern of Suspended Solids in a Small Rubber Catchment (together with K.Y.MOHD & J.Y.MOHD)

SUBSECTION 6.6 Fluvial Landform Evolution and Long Term Processes

- (64) ADAMENKO O.M. (USSR): The Dniester River from the Carpatian Mountains to the Black Sea, Geomorphology and Goecology
- (65) BUCH M. W. (FRG): Late Pleistocene and Holocene Fluvial Geomorpho-Dynamics of River Danube Near Regensburg (Bavaria,FRG) on the Basis of New Absolute Datings
- (66) BUTAKOV G.P. (USSR): The Asymmetry of Slopes of River Valleys in Russian Plain (together with A.P.DEDKOV, V.I.MOZHERIN & J.V.BARBANOV)

- (67) CHEN Z. (China): Léffondrement des Rives et des Causes Principaux au Bief Moyen et Aval du Fleuve Bleu, Chine
- (68) GARDINER V. (Great Britain): Valley Development and Paleohydrology of the Channel Islands
- (69) MANSIKKANIEMI H. (Finland): Glacial Rebound and Baltic Regression Expressed in Fluvial History of Southern Finland
- (70) QIU SHANWEN (China): The Formation and Development of Northern Plain of Xing Kai Lake (together with E.WAN & P.WANG)

SECTION 7: COASTAL GEOMORPHOLOGY

Chairmen: D.KELLETAT, Essen; R.PASKOFF, Paris; E.BIRD, Melbourne;
H.KLUG, Kiel

POSTER SESSION: Tuesday, Sept. 5, 1989, 12.00 - 13.00 h

POSTER SESSION: Tuesday, Sept. 5, 1989, 17.30 - 18.00 h

INTRODUCTION: Tuesday, Sept. 5, 1989, 12.00 h, Room H 8

SUBSECTION 7.1 Tidal Flats, Estuaries, Deltas and Continental Shelves

- (13) DIECKMANN R. (FRG): Salt Marshes, Tidal Flats and Tidal Inlets along the German Bight - A quantitative Geomorphological Overview
- (14) PRANZINI E. (Italy): Fan Delta Evolution in Central Italy and its Relations with Human Activity (together with V.ALESSANDRO, C.BARTOLINI & C.CAPUTO)
- (15) MULRENNAN M. (Ireland): The Response of Coastal Barrier System to Estuarine Reclamation

SUBSECTION 7.2 Coastal Dynamics

- (17) BECKEDAHL H.R. (South Africa): Erosion along the Rock-Dominated Coast of Transkei - a Function of Rock Properties or Coastal Dynamics?
- (18) BERRAJA M. (Canada): Evaluation des Taux d'érosion littorale dans les Iles de Varennes (Quebec, Canada) (together with S.PANASUK, J.C. DIONNE & M.BOUCHARD)
- (19) CAPUTO C. (Italy): Evolutionary Dynamics and Erosion Conditions of the Italian Beaches (together with L.D'ALESSANDRO, G.B.LA MONICA, B.LANDINI & E.LUPIA PALMIERI)
- (20) ERLINGSSON U.B. (Sweden): Sediment Transport of Scania
- (21) HOFSTEDE J.L. (FRG): Morphodynamical Analysis in the German Bight, West Germany: The German MORAN-Project (together with A.SCHÜLLER)
- (22) LOPUCH P.S. (USSR): The Formation of the Shores of Small Lowland Water-Reserves (together with V.M.SHIRIKOV)
- (23) SHERMAN D.J. (USA): Sediment Transport in the Lee of a Groin (together with B.O.BAUER, K.F.NORDSTROM, K.A.JAGGER and J.R.ALLEN)

SUBSECTION 7.3 Coastal Landform Evolution

- (24) ALAM M.S. (Bangladesh): Changing Coastlines of the Lower Ganges-Brahmaputra Delta
- (25) GRAY J. (Canada): Evolution of Coastal Sandspits in Gaspé Peninsula, Eastern Canada in Relation to Late Holocene Sea Level Fluctuations (together with B.HETU)
- (26) MEZA-SANCHEZ M. (Mexico): Coastal Evolution and Geoecological Problems in Cancun Island Yucatan Peninsula, Mexico (together with J.CERVANTES-BORJA)
- (27) MORHANGE Chr. (French Polynesia): Geomorphological Evolution of a Volcanic Tropical Archipelago Borned from Hot Spot - The Case of the Society Islands French Polynesia (together with J.BONVALLOT)
- (28) OOSTEROM P. (Netherlands): Coastal Terraces in Southeast Kenya
- (30) PASKOFF R. (France): Modifications of Coastal Conditions in the Gulf of Gabes, Tunisia, Since Antiquity (together with A.OUESLATI)
- (31) RADTKE U. (FRG): Reconstruction of Pleistocene Sea Level Change: with Examples from Barbados, Chile, Argentina, and Papua New Guinea
- (33) TORCAL L. (Spain): Paleoclimatic Interpretation of Sand Sediments in the West Area of Huelva Province (Spain), Based on Composition and Texture Changes (together with B.TELLO)
- (34) UGARTE F.M. (Spain): The Flandrian Transgression in the Bay of Zarautz (Basque Country, Bay of Biscay) (together with J.ALTUNA, J.M.EDESO, M.ELORZA, M.J.ISTURITZ, J.MUJICA, C.PENALBA, A.URIZ, A.ZEARRETA)

SECTION 8: KARST GEOMORPHOLOGY

Chairmen: K.H.PFEFFER, Tübingen; J.NICOD, Aix en Provence;
M.SWEETING, Oxford

POSTER SESSION: Monday, Sept. 4, 1989, 12.00 - 13.00 h

POSTER SESSION: Monday, Sept. 4, 1989, 17.30 - 18.00 h

INTRODUCTION: Monday, Sept. 4, 1989, 12.00 h, Room H 7

SUBSECTION 8.1 General and High Mountain Karst

(58) ARAKAWA T. (Japan): The Growth Ring of Speleothem, Late Quaternary Climatic Changes and Estimate of its Related Relative Solution Rate of Limestone (together with N.HORI & H.MIURA)

(59) CUCCHI F. (Italy): Relationships between Deep Morphology and Karst Evolution (together with P.FORTI)

(61) LU Y. (China): Karst Geomorphological Features and Economic Constructions in China

(62) YUAN DAOXIAN (China): The Result of Limestone Denudation Observation and Karst Landform in China

SUBSECTION 8.2 Tropical Karst

(63) KOHLER H.C. (Brazil): Evolution and Dynamic of the Tropical Karst of Lagoa Santa/MG, Brazil

(64) SINGH S. (India): Morphogenesis of Guptadham Cave (together with M.S.SINGH & A.DUBEY)

(65) SONG LIN HUA (China): Cockpit Karst and Geologic Structure in South Yunnan, China (together with LIU HONG)

(66) TAN B.K. (Malaysia): Karst Geomorphology and Rockfall Hazards in the Kinta Valley, Malaysia

SUBSECTION 8.3 Mediterranean and Desert Karst

(60) GIL SENIS V. (Spain): Morphometric Characteristics of Rillenkarren from Cretacic Limestone in the Northoriental Prebetic of Valencia, Spain

(68) SORIANO M.A. (Spain): Characteristics of the Alluvial Dolines Developed because of Gypsum Disolution Materials in the Central Ebro Basin, Spain

SUBSECTION 8.4 Water in Karst

(67) GUNN J. (Great Britain): Comparative Hydrochemistry of Five Karst Springs in the English Peak District, 1977-1988 (together with D.RAPER & N.CHRISTOPHER)

SECTION 9: LAND EVALUATION, GEOMORPHOLOGICAL MAPPING AND REMOTE SENSING

Chairmen: H.LIEDTKE, Bochum; C.EMBLETON, London

POSTER SESSION: Tuesday, Sept. 5, 1989, 12.00 - 13.00 h

POSTER SESSION: Tuesday, Sept. 5, 1989, 17.30 - 18.00 h

INTRODUCTION: Tuesday, Sept. 5, 1989, 12.00 h, Room H 6

SUBSECTION 9.1 Land Evaluation

- (36) GUZZETTI F. (Italy): The Use of a Geographic Information System for the Preparation of a Landslide Inventory Map in the Umbria Region, Central Italy (together with CARDINALI, LIGI, BORTOLUZZI)
- (37) LEHMANN R. (FRG): Mapping of the Potential of the Natural Environment in the Scale 1:100 000 on the Base of the Geomorphological Map (GMK 100) of the Federal Republic of Germany
- (39) PECSI M. (Hungary): Geomorphological Mapping and Environmental Protection
- (40) SCHÄFFER G. (Austria): Environmental Geology - Geotechnics
- (41) TARDY J. (Hungary): The Geoscience Information System of the Hungarian Nature Protection

SUBSECTION 9.2 Geomorphological Mapping

- (42) BARTOLINI C. (Italy): Small Scale Geomorphological Mapping: An Essay (together with MENEGHEL & SAURO)
- (43) BERGQVIST E. (Sweden): Maps of Ancient Inland Dunes and Gully Landscapes in Sweden
- (44) BEUKENKAMP P.C. (Netherlands): Geomorphological Mapping of a High-mountain Area: Explanation of a Part of the Southern Alps of France (Basin of Barcelonnette)
- (45) BOCCO G. (Mexico): Geomorphological Mapping Using Spot Imagery for Gully Erosion Assessments, a Study Case in Central Mexico (together with J.L. PALACIO & L.R. VALENZUELA)
- (46) BOUGERE J. (France): Geomorphological Map 1:25 000 of Possession Island (Crozet Archipelago, Terres Australes et Antarctiques Francaises - Lat.S 46/Lgt.E 51)

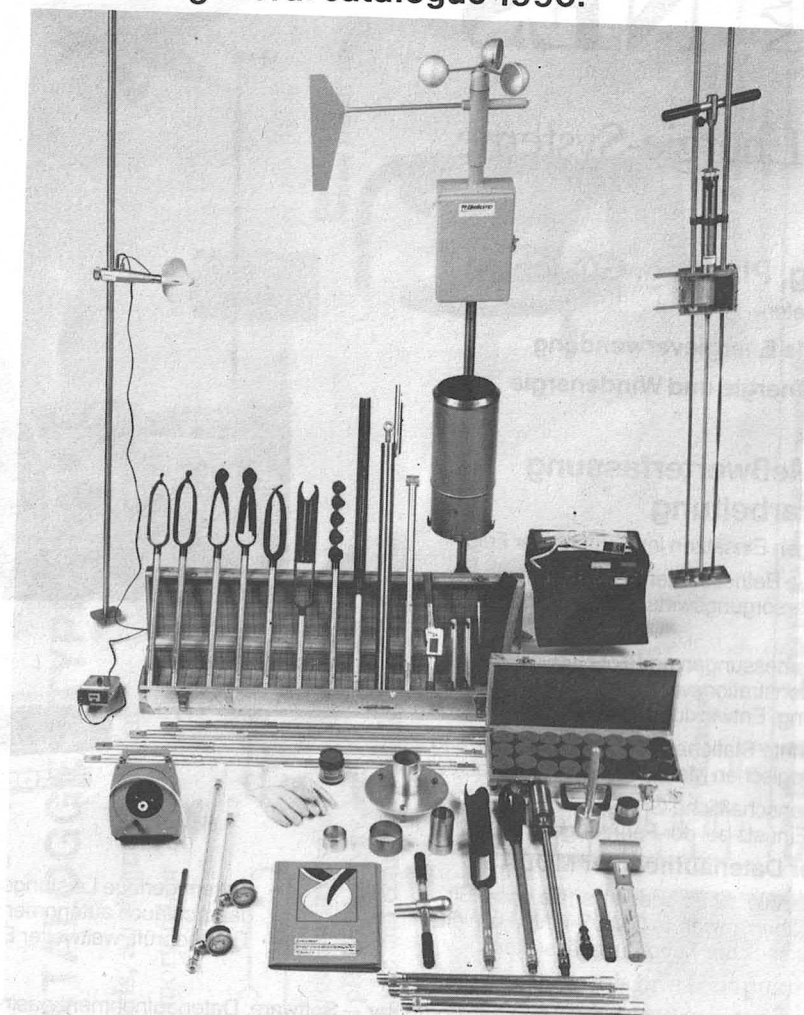
- (48) CASTIGLIONI G.B. (Italy): Geomorphological Mapping in the Po Plain, Northern Italy (together with A.BIANCOTTI, M.BONDESAN, G.C.CORTEMIGLIA, C.ELMI, V.FAVERO, G.GASPERI, G.MARCHETTI, G.ORBELLI, L.SORBINI, C.TELLINI)
- (49) CHEN Z.M. (China): Designing of China's general Geomorphologic Map and its Sample Map 1: 4 000 000
- (50) CUCCHI F. (Italy): Map of the Main Man's Impacts on Karst in Italy
- (51) DRAMIS F. (Italy): Geomorphological Map of the Trionto River Basin (Calabria, Southern Italy)
- (52) KLEMSDAL T. (Norway): The Geomorphological Maps of Norway and Svalbard, 1: 1 million (together with O.E.SJULSEN)
- (53) LINSENBARTH A. (Poland): Geomorphology of Sand Desert in Libya
- (54) LUGO HUBP J. (Mexico): Geomorphological Maps of Mexico (together with Q.F.ACEVES, F.C.CORDOVA & A.M.GARCIA)
- (55) RUPKE J. (Netherlands): Alpine Geomorphology, Method of Surveying and Geotechnical Use of Detailed Geomorphological Data
- (56) SCHULZ G. (FRG): Contour Line Analysis in Physical Geography, with Reference to Pleistocene Landforms in Peru
- (57) SU SHI-YU (China): Development of Geomorphological Mapping in China
- (58) VILLWOCK G. (GDR): Geomorphological Approach to Mapping of Landscape Structure of P.D.R. Yemen
- (59) XU G. (China): Approaching to the Negative Landform Mapping of Mountains and Hills

SUBSECTION 9.3 Remote Sensing

- (60) BENNAT H. (FRG): Maps from Remote Sensing Data for Geoscientific Research in the Antarctica (together with K.BRUNK)
- (61) COUDE A. (France): Study of Forms and Limits of Drumlins by Digital Process and Computer-Aided Mapping from Aerial Photographs
- (62) DE DAPPER M. (Belgium): The Use of Spot-imagery for the Detection of Geomorphological and Superficial Hydrogeological Phenomena in a Dambo Environment on the Zaire-Zambezi Watershed near Lubumbashi, Shaba, Zaire (together with R.GOSSENS)

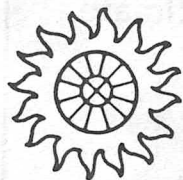
- (63) DIOP M. (Japan): Detecting Vegetation Changes Around Some Streams in Chugoku District (Southwestern Japan) Using Landsat Data (together with N.HORI, K.NAKANE)
- (64) HAAG Th. (FRG): Recording and Handling of Geomorphological and Environmental Data with Electronical Data Processing (Cartography and Data Bank) and the Usage in Public Administration
- (65) KESIK A. (Canada): Geomorphological Map of the Yukon Territory, Canada Based on Remote Sensing Data
- (66) LOCZY D. (Hungary): Mapping Flood-Plain Landforms and Landuse from Satellite Image (together with J.BALOGH)
- (67) MA Z. (China): Remote Sensing of Tidal Mudflat in China (together with LIANG SHUNLIN)
- (68) MAGAGNOSC J.S. (France): Geomorphological, Seismical and Neotectonic Map of Western Dahra (Algerie)
- (69) MAXWELL T.A. (USA): Remote Sensing Analysis of Temporal Changes in Southwest Egypt: Geomorphologic Implications (together with C.V.HAYNES)
- (70) WANG SHIN (Taiwan): Coastal Geomorphological Study of Chang-Hua Area by Using Multi-Date Remotely Sensed Imagery (together with MING-JANG LIN, FANG-JENG PU, LING-YUH SHEU)
- (71) SUBRAMANYAN V. (India): Satellite Remote Sensing of the Structural Morphology of the Vindhyan Deccan Volcanics of Central and Western India
- (72) VOGG R. (FRG): Application of LANDSAT-5/TM Data for Land Use Classification in the Highlands of Gojam/Ethiopia (together with J.LOHMANN)
- (73) VOGT Th. (France): Classification of Surficial Formations on the Southern Border of Taklamakan (Xinjiang, China) by Spot CCT Data Digital Processing

Specialist in equipment for soil, water, plant, climate and environmental research.
Ask for free general catalogue 1990.



Eijkelkamp
Agriseach Equipment

P.O. Box 4 - 6987 ZG Giesbeek, The Netherlands
 Phone: 31(08336)1941* Telefax: 31(08336)2167



NES

Neue Energie-Systeme

Beratung, Planung, Gutachten

auf den Gebieten

- Rationelle Energieverwendung
- Sonnenenergie und Windenergie

Mobile Meßwerterfassung und -verarbeitung

bei schwierigen Einsätzen im Betrieb oder Feld

- Dezentrale Betriebsdatenüberwachung in der Energieversorgungswirtschaft und Energieberatung
- Leistungsmessungen an Pilot- und Demonstrationsvorhaben (Forschung, Entwicklung, Innovation),
- Unbemannte Stationen bei Umweltschutz- und meteorologischen Messung, Standortgutachten
- Geowissenschaftliche Grundlagenforschung, mobiler Einsatz bei der Fahrzeugerprobung

● Mobiler Datenaufnehmer MODAS®

- 38 Kanäle, 12 Bit oder 4 Kanäle und 8 Bit
- langjährig bewährte CMOS-RAM Halbleiter-Steckspeicher, hohe Zuverlässigkeit

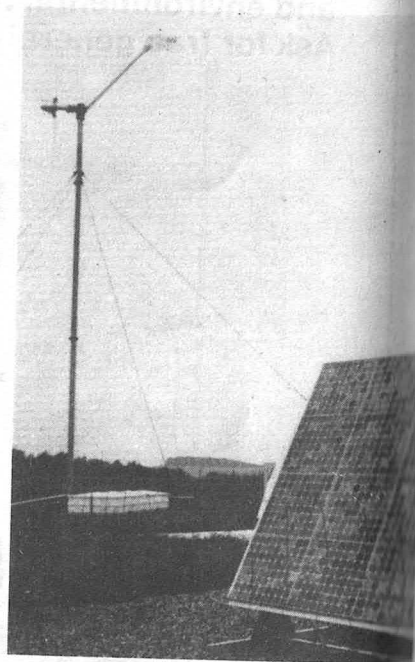
● Systemangebot und -integration:

Meßfühler – Datenaufnehmer – Personalcomputer – Software; Datenaufnehmer-Leasing

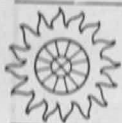
● Auftragsmessungen:

Meßstellenplanung, Auf- und Abbau, laufende Datenauswertung, Analyse und Bericht

für Gewerbe, Industrie, Kommunen, Behörden und Entwicklungsländer



- Extrem geringe Leistungsaufnahme, dadurch auch autonomer Betrieb
- TÜV-geprüft, weltweiter Einsatz



NES

Neue Energie-Systeme
New Energy-Systems

Dr. Falk Auer, Berliner Str. 6, Tel. 061 84 / 35 10
D-6456 Langenselbold, West-Germany

Automatical, digital recording of data with:

SEBA - DATALOGGER TYPE MDS II

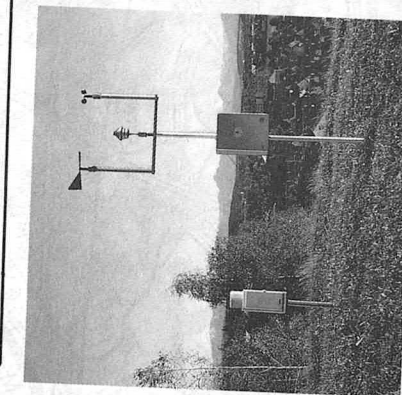
1 - 8 input channels, analogue or digital
C-MOS RAM Memory 64 or 256 kByte

Registration of

surface- and groundwaterlevels -
waterquality : pH, conductivity, etc. -
sewage : discharge and constitution of the channel system -

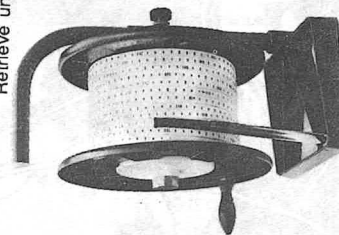
Meteorological Station
portable or stationary

rainfall (tipping bucket) -
wind -
temperature -
humidity -
radiation -
etc.



RS 232

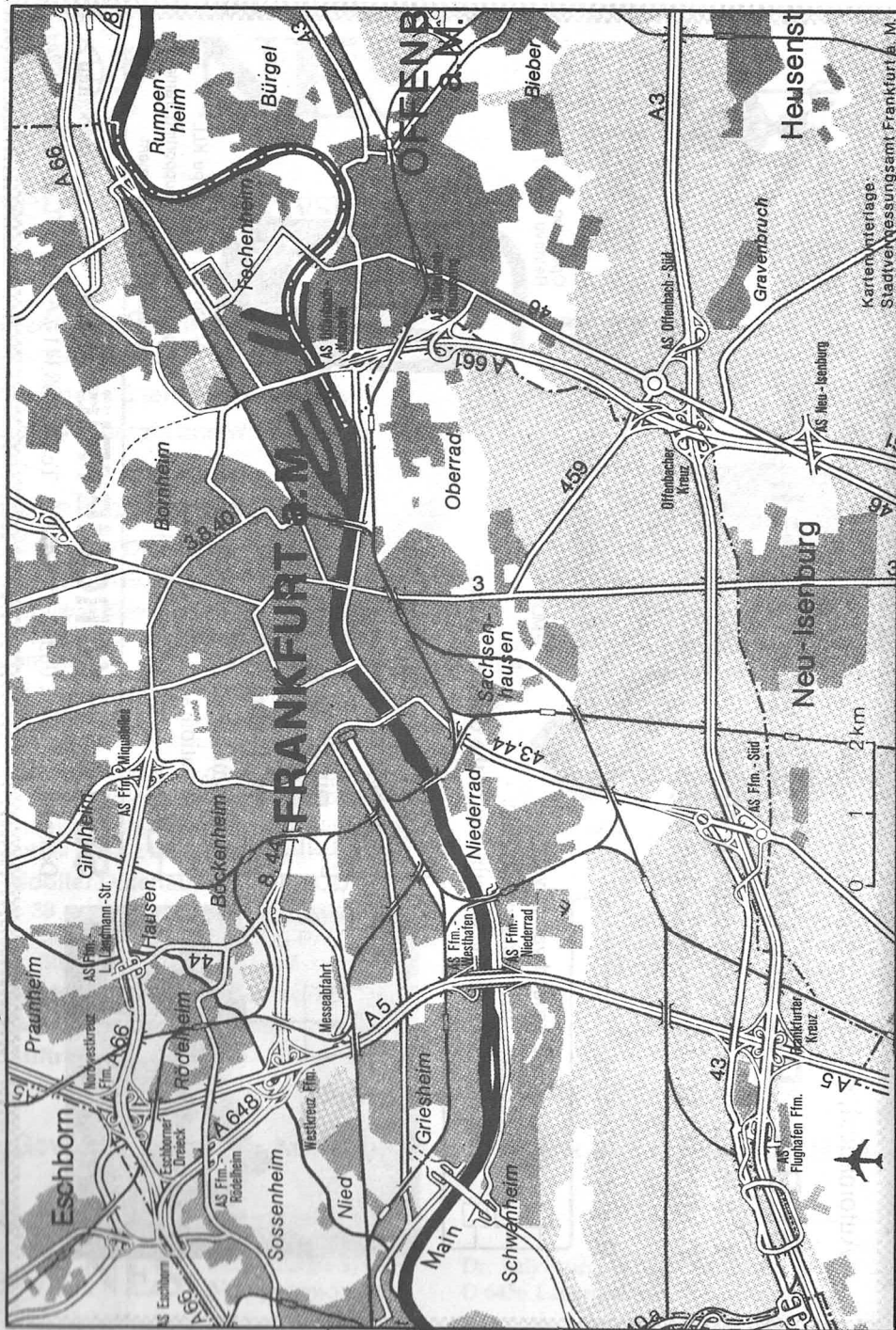
Operation /
Retrieve unit HT 100



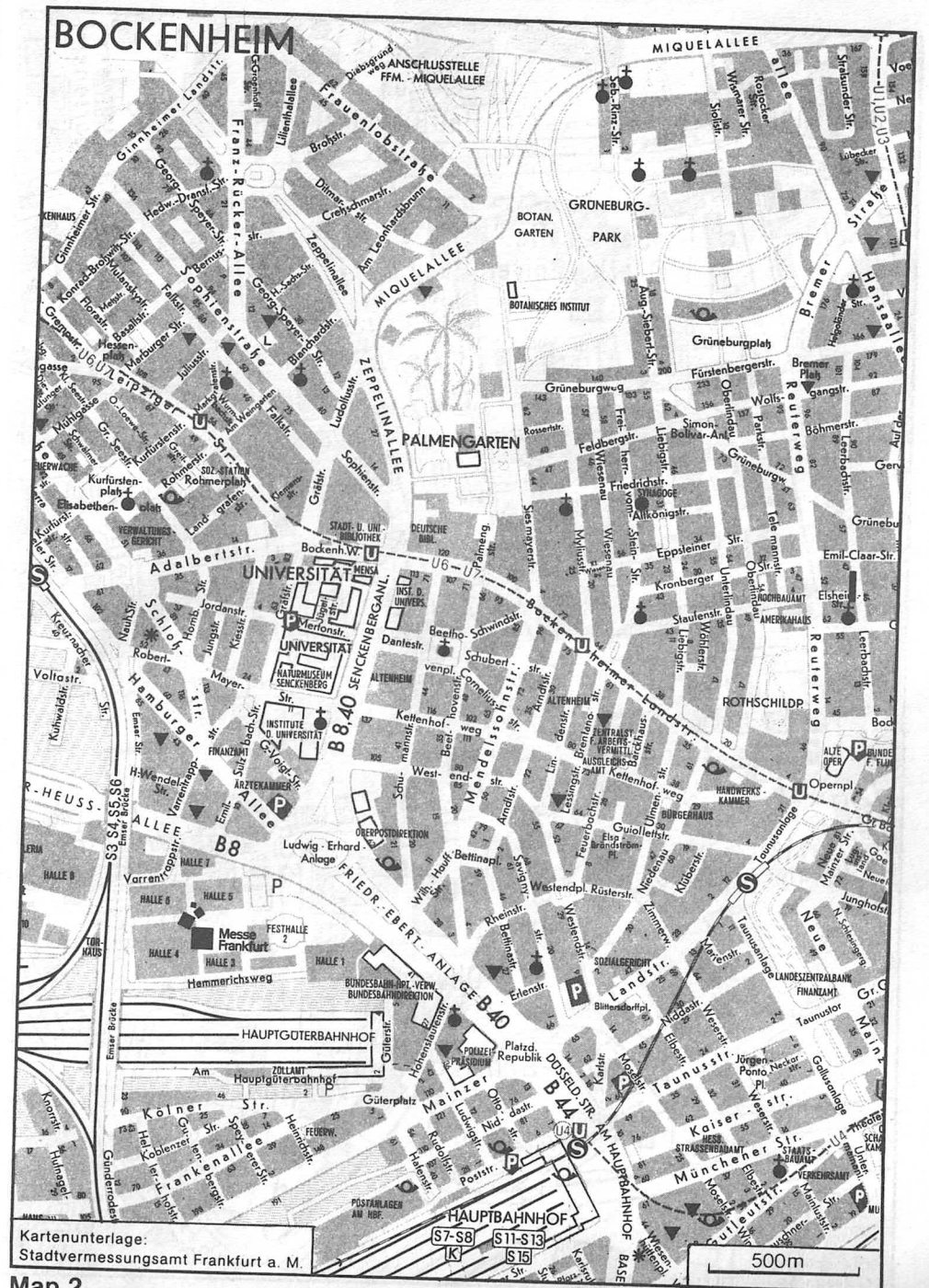
SEBA Contact Meter Type KLL
Range 80-500 m with supporting frame
for groundwater measurement

SEBA HYDROMETRIE GmbH

D 8950 Kaufbeuren 2
Dessestr. 5 * Tel. 08341 / * 62026 Telefax 08341 / 62029 Telex seba 54624



Map 1



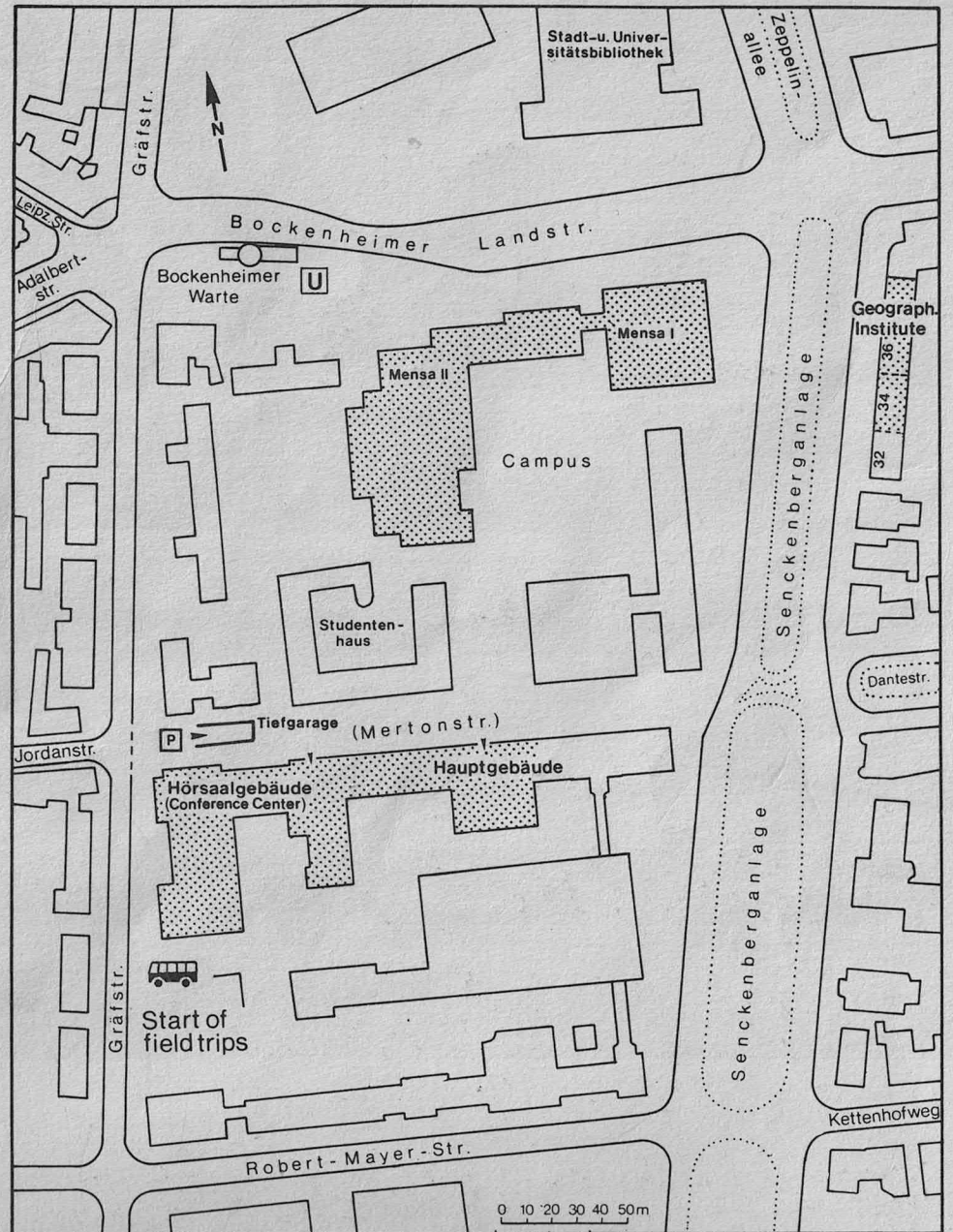
Map 2



Map 3

CONTENTS

	Page
Welcome	1
Organizing Committee	2
List of Honorary Members	3
List of Sponsors	4
Registration and Information Desk	5
Opening Session	6
Lecture Sessions	6
Poster Sessions	6
Exhibition	6
Organisational Meetings at the Conference	7
Business Meetings	8
Social Events	9
Cultural Program	10
General Information	10
Field Trips	11
Sections of Lecture and Poster Program	17
Information for Conference Proceedings	20
Table: Lecture Sessions, Lecture Halls	(magenta pages)
Timetable	(magenta pages)
Lecture Program	(yellow pages)
Poster Program	(blue pages)
Maps	(appendix)



nach Stadtkarte Frankfurt 1:2000

Map 4